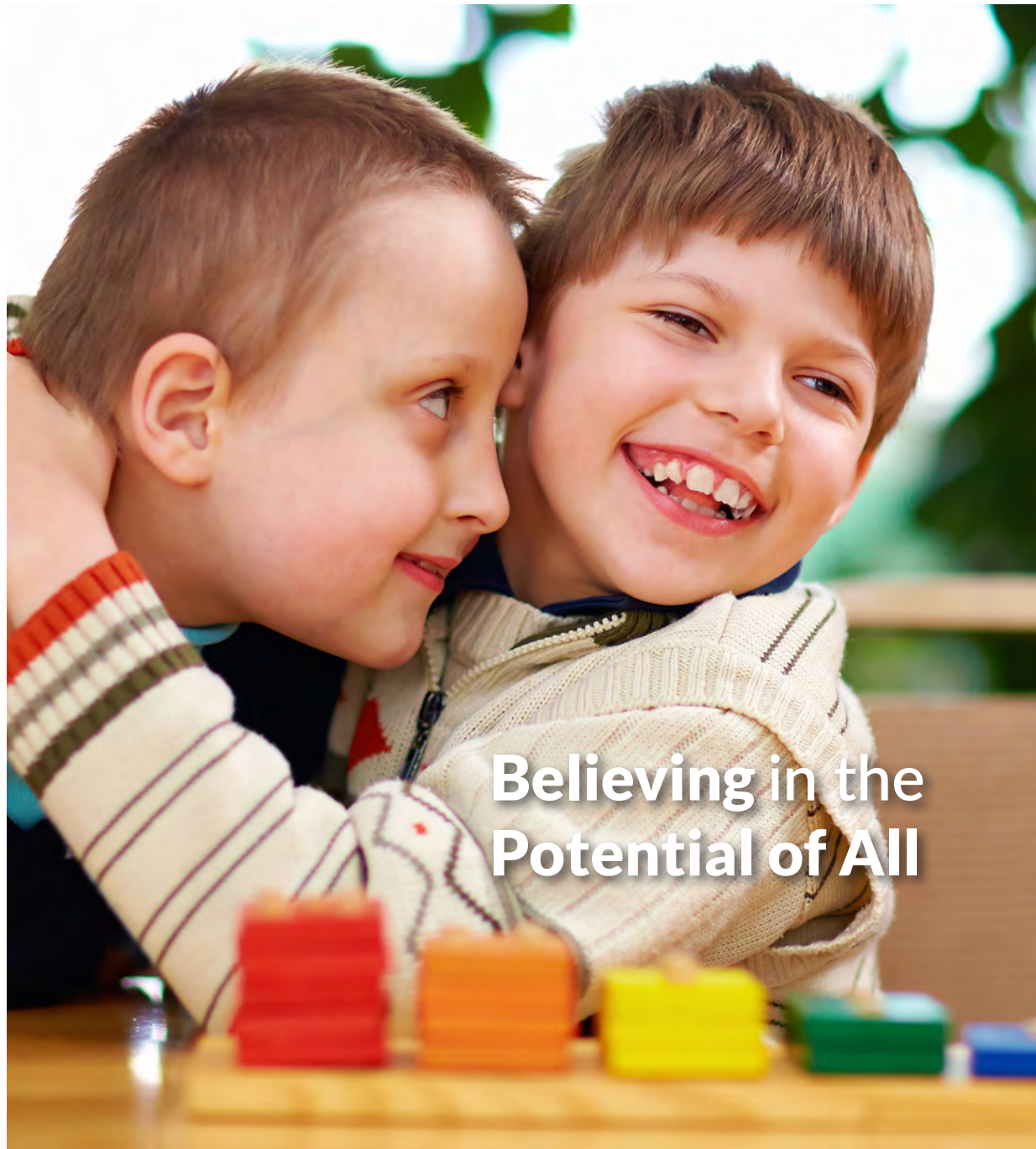




# Imagine!

2018 ANNUAL REPORT



**Believing in the  
Potential of All**



# Our History

Imagine! was established in 1963 by a group of parents determined to see that their children with developmental disabilities had the opportunity to participate in their community.

We continue to use that original goal as the basis for our mission. We believe that people with intellectual or developmental disabilities have much to contribute, and providing the tools and supports that allow them to show what they have to offer benefits us all.

Imagine! offers a continuum of services to provide supports for people through their lifetime. In 2017-2018, Imagine! served 4,176 individuals and their families.

# Our Mission

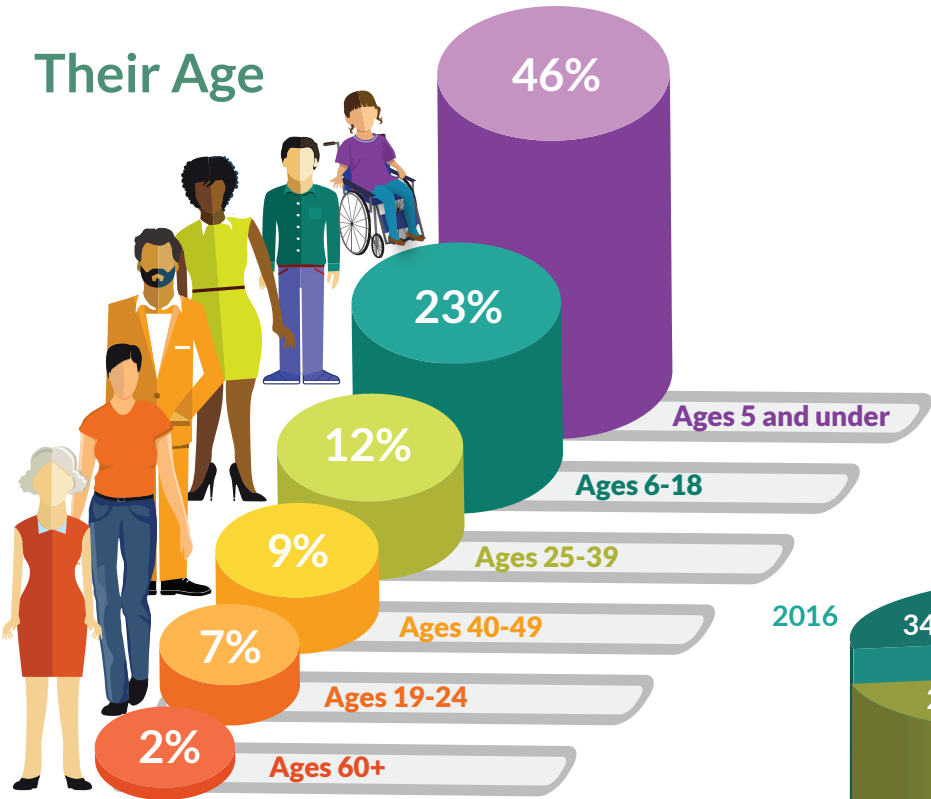
The mission of Imagine! is to create a world of opportunity for all abilities.

## Values and Principles

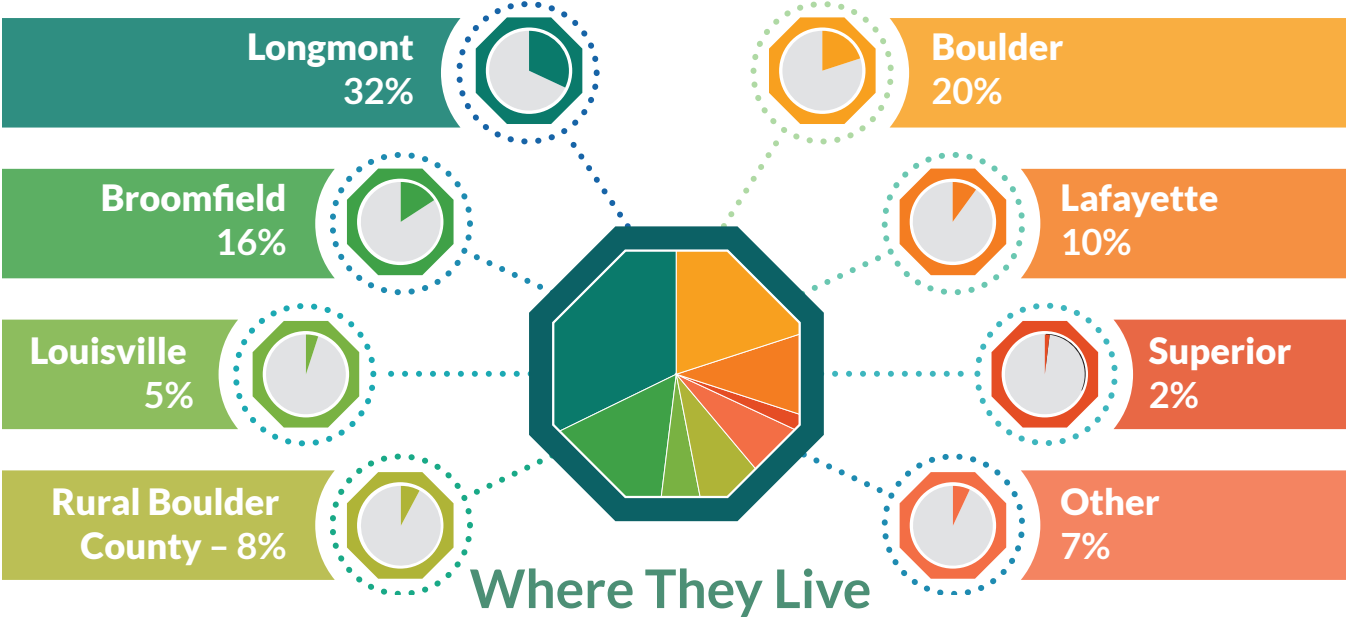
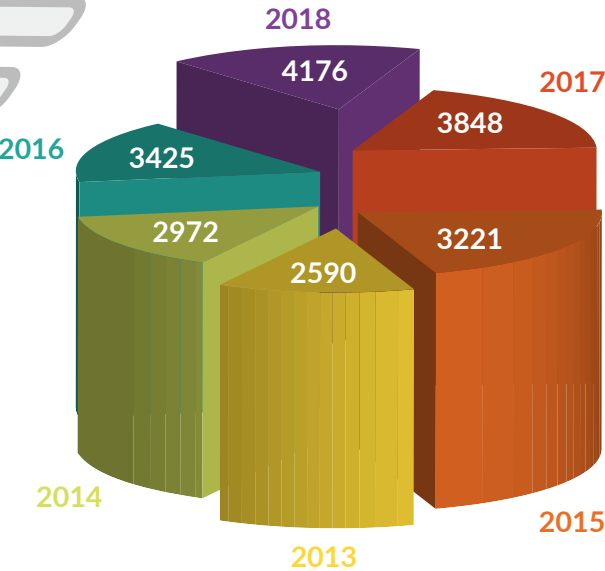
- Our workforce is our number one asset.
- Families are essential to our success.
- We embrace a culture of support and creativity.
- We inspire a positive and inclusive community.
- We honor our tradition of integrity and leadership.
- We believe in the potential of all.

# About the People Imagine! Serves

## Their Age



## Number of People Served



## Where They Live



Dear Friend of Imagine!:

Creating a world of opportunity for all abilities.

That’s Imagine!’s mission, and we work to meet it every day. The great part about our work, however, is that we don’t have to meet that mission all by ourselves.

We’re incredibly fortunate to live and work in a community that is so willing to support us in many, many ways. Members of our community actively seek out opportunities to see how they can participate in our work. I’m aware that not every organization such as ours enjoys the same sort of backing, and I don’t take it for granted.

The stories and information shared in this annual report clearly demonstrate what happens when a community unifies around a shared goal, and the positive outcomes that can result.

I am proud of what our work has achieved, and pledge that Imagine! will continue to build and grow the partnerships and collaborations that have made us a uniquely successful and highly regarded provider of services for individuals with intellectual and developmental disabilities.

I also pledge that we will continue to move forward with our mission, creating and offering innovative programs and services that truly open the door to a world of opportunity for all abilities.

I know our community will be right there with us.

 Sincerely,  
*Mark Emery*  
Chief Executive Officer, Imagine!

2017 – 2018 Imagine! Executive Team

<b>Mark Emery</b> Chief Executive Officer	<b>Karen Kalis</b> Director of Human Resources (July-April)	<b>Rebecca Novinger</b> Chief Strategy Officer
<b>Laura Ball</b> Director of Human Resources (April-June)	<b>Shannon Kluth</b> Director of Service Operations	<b>Laurel Rochester</b> Director of Innovations
<b>Jenna Corder</b> Director of Client Relations	<b>Patti Micklin</b> Imagine! Foundation Executive Director	<b>Caroline Siegfried</b> Executive Assistant
<b>Kevin Harding</b> Director of Information Technology	<b>John Nevins</b> Chief Financial Officer	<b>Greg Wellems</b> Chief Operating Officer Director of Business Development (July-February)
<b>Fred Hobbs</b> Director of Public Relations		

Dear Friend of Imagine!:


Inclusion.

It’s a word you hear often in the field of services for individuals with intellectual and developmental disabilities (I/DD). Historically, people with I/DD have been marginalized in their communities, schools, and workplaces. That is why organizations like Imagine! have worked so hard to end the ugly history of exclusion and continue to work to ensure that history doesn’t repeat itself.

“Creating a world of opportunities for all abilities” means establishing inclusion as a baseline for how we all live our lives.

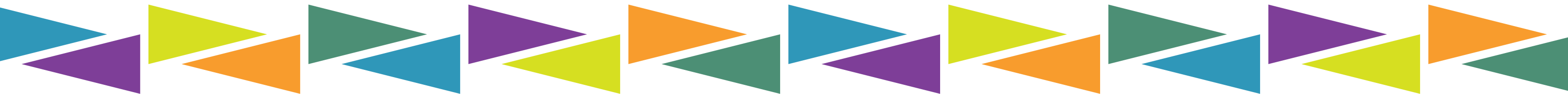
During my time as president of the Imagine! Board of Directors, I’ve had the distinctive opportunity to experience what I’m going to call “reverse inclusion” – individuals, families, businesses, foundations, and donors who have all **made the effort to be part of what Imagine! does.**

By reading this report, you, too, are choosing to be included in what Imagine! does. I thank you for that and, together, let’s continue the effort to make our work and our worlds inclusive in the very best sense of the word.

 Sincerely,  
*Heidi Storz*  
President, Imagine! Board of Directors

2017 – 2018 Imagine! Board of Directors

<b>Heidi Storz</b> President	<b>Cathy Bodine</b>	<b>German Nunez</b>
<b>Ken Curtis</b> President Elect	<b>Sarah Boylan</b>	<b>Ed Schlichting</b>
<b>Mark Zentner</b> Treasurer	<b>Scott Doyen</b>	<b>Charles Wellman</b>
<b>Ronald Alford</b> Secretary	<b>Tim Haverstick</b>	<b>Mark Emery</b> CEO
	<b>Laura Koch</b>	
	<b>Bella Larsen</b>	
	<b>Kevin Nelson</b>	





## Care Coordination

Imagine!'s Care Coordination department acts as the gateway to services for individuals with intellectual disabilities living in our community. Through information and referrals, as well as financial assistance, Imagine!'s Care Coordination team helps people navigate the complex system of services and ease their emotional and financial burdens.

The Tyler family (Jessica, Jeff, Will, and Ben) met Imagine! in early 2017 under trying circumstances, but since then, the relationship has blossomed.

Shortly after Ben was born, he and his father tripped down the stairs and ended up in the emergency room. Jeff dislocated his shoulder, while Ben suffered a brain bleed and began treatment in a Neonatal Intensive Care Unit (NICU) at Children's Hospital.

After two weeks in the NICU, Ben was released from Children's Hospital, and the Tyler family could be at home again as a family. During their time at the



hospital, the family was first made aware of Imagine!.

"I called Imagine! right away," said Jessica. She was directed to Imagine!'s Care Coordination department. "I didn't even know where to start and Erika Skewes (Imagine! Service Coordination Supervisor) knew exactly who to connect me with." At three months old, Ben began physical, occupational, and vision therapies.

Fast forward to 15 months later, you'll see a happy and healthy boy running around, using one-syllable words.

"We had doctors tell us that they didn't know if he was going to walk or talk. And now you see that he's doing both those things and more," said Jessica. "It's truly been miraculous."

The Tyler family feels strongly that without Erika pushing to get Ben that head start, his life could be much more challenging. "It's not lost on us how different his story could have been," said Jessica.

"I didn't even know where to start and Imagine! knew exactly who to connect me with."

## In 2017-18, Imagine!'s Care Coordination Team...



Provided information and referrals to **2,346 families** providing at-home care for an individual with intellectual disabilities.



Distributed **\$1,144,502** in funding to help **459 families** with the extraordinary costs of raising a child with autism or other special needs.



Distributed **\$143,359** in emergency funds to **104 individuals and families** facing crisis situations requiring immediate financial intervention.



Coordinated services for **1,126 babies and toddlers** with developmental delays or disabilities.

### Family Support

Imagine!'s Family Support services are designed to connect families with information, community resources, and assistance so they can raise their loved one at home.

### Autism Spectrum Disorder Program

Imagine!'s Autism Spectrum Disorder program provides supports for local children on the autism spectrum who don't qualify for state funded services.

### Case Management

Imagine! Case Managers work with individuals and families to determine which services will help them reach their needs, goals, and desires.



# Early Intervention

Imagine!’s Early Intervention department provides service coordination, parent education, and therapeutic services to children ages birth to three. Imagine! believes that the family is the child’s first teacher, and takes a whole child approach to encourage parents and children to build upon their strengths.



Coraly and Jose are from Puerto Rico and have lived there most of their lives. They welcomed their beautiful daughter, Sofia, into the world and discovered she has Down syndrome. After researching education and public services for children with developmental disabilities in Puerto Rico, they were concerned for Sofia’s quality of life and decided to move.

When Sofia was one and a half years old, they officially made a transition to Colorado. They found a home in Longmont and Jose continued his dentistry career in Boulder. One of Jose’s patients told him about Imagine! and the services it offers to individuals with developmental disabilities. Coraly and Jose called Imagine! right away and enrolled Sofia in Imagine! services.

“Early intervention is crucial,” said Jose. “That’s why we decided as soon as she was born to make a change.” She received physical, speech, and occupational therapies at home, and attended the Community Calendar Activities on a weekly basis to improve her social skills. “It was great,” said Coraly. “Her motor skills, speech, and feeding improved greatly and we became good friends with her therapist.”

“You can tell when someone is doing something for the paycheck and when it’s because they love what they’re doing. That was impressive to me, seeing the Imagine! therapists work with my daughter because they love what they’re doing,” said Jose.

“You can tell when someone is doing something for the paycheck and when it’s because they love what they’re doing.”



## In 2017-18, Imagine!’s Early Intervention Team



WITH DEVELOPMENTAL DELAYS IMPROVE THEIR COMMUNICATION, MOTOR, AND/OR SOCIAL SKILLS THROUGH EARLY INTERVENTION THERAPIES.



DESIGNED FOR CHILDREN TO MEET THEIR GOALS IN A FUN AND PLAYFUL ENVIRONMENT.

**Home Visits**

Imagine!’s Early Intervention team takes a family centered approach based on the uniqueness of each family and their culture. We provide services to children and families at home and in the community where they live, learn, and play.

**Hanen Program**

Imagine! offers Hanen parent-education programs to families who want to enhance their children’s language development and communication.

**Community Calendar Activities**

Imagine! introduces families to places in our community that offer great activities and opportunities for children to meet their goals through fun and play. All activities encourage motor, sensory, social-emotional, cognitive, and speech-language development.





## School Age Services

Imagine! provides summer camp, after-school, and school closure day programs for school-aged children with developmental disabilities. All activities are community-based and are designed within a therapeutic framework.



Evan Dittig is from New Jersey and founded Skate.Now, a skateboard instructional service. Last summer, he came all the way out to Colorado to offer free skateboard lessons to participants in Imagine!'s Summer Camp Program.

"Skateboarding is not for a specific person," said Evan. "Anyone can go skateboarding and have a blast doing it. That's why we like to offer to everybody the skills and guidance it takes to learn this sport."

Evan made sure to make his class inclusive and to meet students at their level. "Some of the kids weren't riding, but putting their hands on the skateboard and rolling it back and forth and still getting enjoyment out of it," Evan noted.

So why did Evan come out to Colorado to work with people served by Imagine!? "In my last year of college, I learned a lot about philanthropic work and giving back, and I understood a greater concept of what it feels like to help those that are less fortunate. Really hit me in the heart. You really just want to make an impact and better the world because this world needs it."

**"Skateboarding is not for a specific person. Anyone can go skateboarding and have a blast doing it."**



## In 2017-18, Imagine!'s School Age Services Assisted

**80**

**CHILDREN WITH  
DEVELOPMENTAL  
DISABILITIES**

**IN DEVELOPING LIFE-LONG SKILLS  
THROUGH SUMMER CAMP, AFTER SCHOOL,  
AND COMMUNITY ACTIVITIES.**

### **Summer Camp**

Imagine!'s Summer Camp program provides a sense of acceptance and self among peers, enhances participants' quality of life through the development of socialization skills and coordination skills, and promotes community integration.

### **School Closure Days Activities**

Imagine!'s School Closure Days activities allow students to engage in recreational and therapeutic outings when school is out of session, including winter holidays and Spring Break. This permits more opportunities to socialize with peers and participate in their communities.

### **Centre Stage**

Imagine!'s Centre Stage class introduces participants to the basics of theater and drama. Each activity focuses on integral aspects of theater including set design, acting, costume design, singing, dancing, choreography, lighting, and more.





## Adult Day Programs

Imagine!'s Adult Day Programs are designed to provide a sense of acceptance among peers, to promote community integration, and to enhance participants' quality of life through the development of socialization skills, coordination skills, and fine and gross motor skills.



The way we communicate with each other has changed over the years, and Imagine! works to ensure that those we serve are keeping up with the times.

That is why last year Imagine! hosted a podcast class, where instructors assisted students in preparing written material and then had them sing, rap, or speak into a microphone. Staff members then recorded their voices onto a laptop and edited the tracks into short clips, which were later assembled into a podcast.

In this way, adults with I/DD can share their thoughts, ideas, and talents, as well as collaboratively-created rhymes, stories, and poems, with an audience the size and scope of which would have been unthinkable just a few short years ago.

Here's an example of a poem written and recorded together by the members of Imagine!'s podcast class:

"Please bring a keg for Easter egg  
Easter is my favorite Holiday  
Hip hip hooray!  
Pam, did you steal my ham?  
Now we'll have to eat lamb."

"People served by Imagine! can share their thoughts, ideas, and talents with an audience the size of which would have been unthinkable just a few short years ago."



## In 2017-18, Imagine!'s Adult Day Services Supported

496

ADULTS WITH  
INTELLECTUAL  
DISABILITIES

THROUGH ENRICHING AND THERAPEUTIC  
PROGRAMS AND CLASSES

### Art

Imagine! supports its talented artists through a variety of art classes, and frequently showcases that art to the public, including an annual show at the Dairy Arts Center in Boulder.

### Friday and Saturday Nights Out

Imagine! uses a hands-on approach to developing and practicing life skills while attending festivals, dances, cultural events, and other exciting activities in the Boulder/Longmont/Denver area.

### Sports

Imagine!'s comprehensive sports classes expand and fine tune each participant's skill acquisition, along with socializing with peers and developing new friendships in a sports setting.





## Employment

Imagine! offers a variety of employment opportunities for adults with intellectual and developmental disabilities. Imagine! believes that engaging in quality community work opportunities sets the foundation for reaching everyone's highest potential.

Since 2005, Imagine! has partnered with InClover to employ individuals with intellectual and developmental disabilities (I/DD).

InClover develops medicines for companion animals like dogs, cats, and horses. Individuals served by Imagine! work at InClover doing a variety of tasks that support the company's new product marketing.

Supported employment such as this offers people who have a disability the opportunity to develop vital job skills and become active participants in their communities. The benefits extend far beyond helping people with I/DD, however. Businesses using our services are able to reduce recruitment and training expenses as they benefit from a diversified employee pool. Partnering with Imagine! is a win-win situation.

Rebecca Rose, CEO of InClover, agrees. "As a business owner, you have to look at the return. With Imagine!, we are able to get so many more things done in a timely and efficient manner. There's no reason a business couldn't benefit from the flexibility of having a trained and really motivated workforce at their disposal."

"There's no reason a business couldn't benefit from the flexibility of having a trained and really motivated workforce at their disposal."



## In 2017-18, Imagine!'s Employment Services

PROVIDED JOB TRAINING AND PLACEMENT FOR

144

ADULTS WITH  
INTELLECTUAL  
DISABILITIES

### Individual Employment

Imagine! supports individuals with intellectual disabilities in finding and retaining meaningful employment through resume writing, job search assistance, job training and coaching, and ongoing work support.

### Group Employment

For those individuals who aren't able to work independently but still desire the self-esteem and personal growth that comes with employment, Imagine! offers a variety of opportunities for group employment.

### Business Partners

Imagine! currently partners with more than 40 businesses across Boulder and Broomfield counties to provide supported employment solutions for hundreds of individuals.





## Residential Services

Imagine! offers customized residential and community access options to adults with physical, developmental, and cognitive disabilities. Imagine! strives to ensure that the lives of the people we serve reflect the diversity of lifestyle choices that are available to all citizens. We place priority on achieving individual dignity, independence, privacy, and quality of life.



Residents of Imagine!'s Santa Fe Group Home spent the Spring and Summer creating a backyard garden that would make the greenest of green thumbs green with envy.

Fresh cucumbers, tomatoes, peas, radishes, and other vegetables make their way to the Santa Fe dinner table on a regular basis, and the residents have learned so much about what it takes to tend a successful garden.

One of Imagine!'s core beliefs is that every individual has the ability to learn new skills, and it is our goal to ensure that all individuals are supported in this, and that all staff are trained on how to provide this support. The Santa Fe garden is a perfect example of this goal in action.

Even better, the garden opens the doors to genuine interactions with neighbors. Whether it is sharing extra zucchini or discussing the best way to get rid of a tomato hornworm, not only does the garden grow food and flowers, it grows friendships as well.

**“Not only does the garden grow food and flowers,  
it grows friendships as well.”**

## In 2017-18, Imagine!'s Residential Services

PROVIDED A VARIETY OF  
RESIDENTIAL OPTIONS FOR

**165**

ADULTS WITH  
INTELLECTUAL  
DISABILITIES



### **Family Model**

Imagine!'s In-Home Care Alternative Home (or Family Model) provides individuals in services with staff members in their own home, instead of requiring that individual to move out into a Group Home or Host Home.

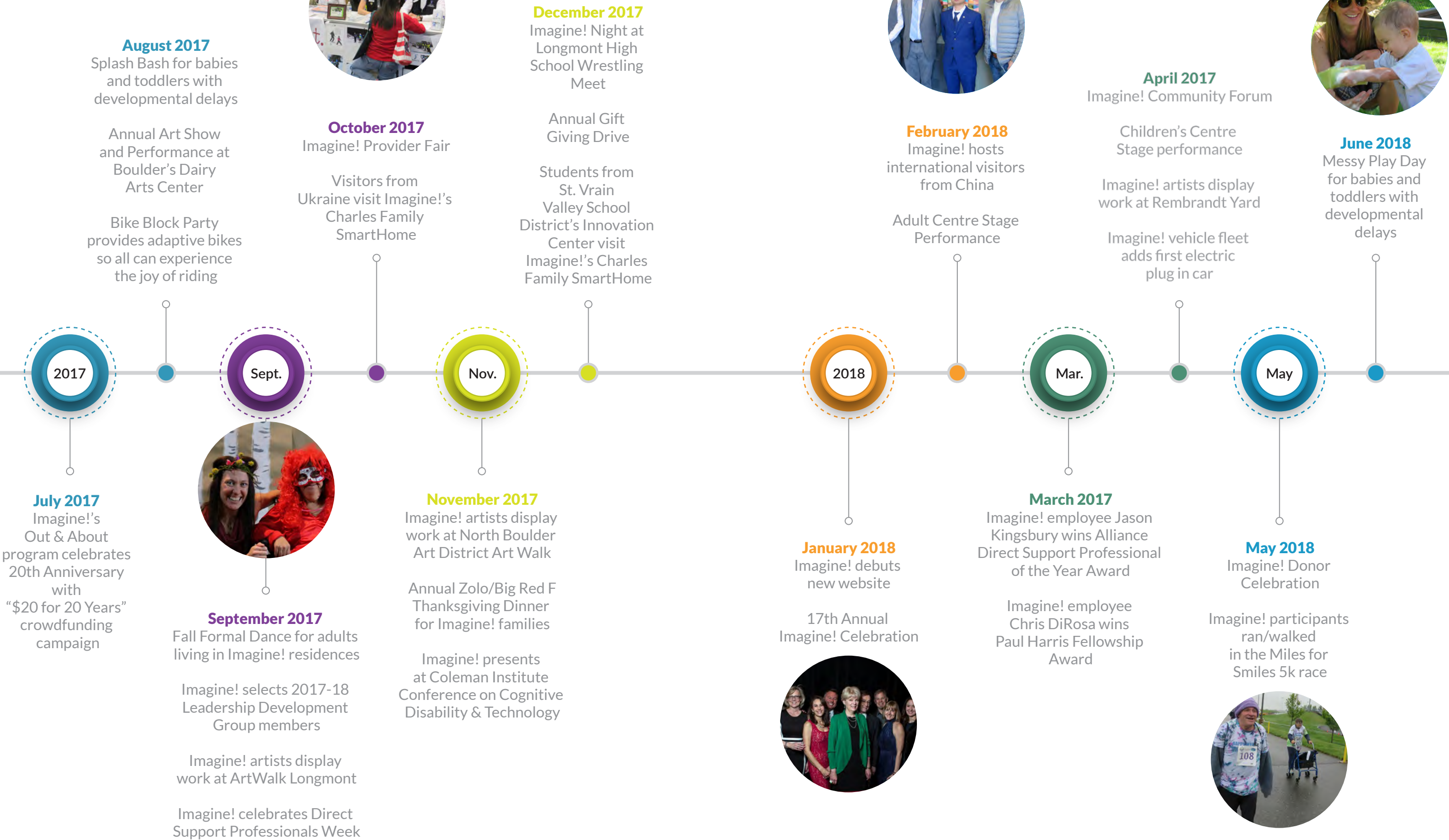
### **Group Homes**

Each Imagine! Group Home program offers a different level of supports, depending on individual needs. Imagine!'s Group Home program also offers social opportunities and activities with peers.

### **Host Homes**

In a Host Home, an individual with an intellectual or developmental disability chooses to live in a qualified provider's home. Imagine! provides oversight of the services and helps connect the individual and their provider with community resources.

# A Year of Community







## Mental Health and Behavioral Services

Imagine! offers mental health services, which may incorporate therapy or wellness and recovery action plans in a variety of settings, and embedded behavioral supports, which focus on skill acquisition, behavior reduction, social skills training, and verbal behavior training.

In 2017-18, Imagine! provided mental health services and behavioral health services to **365** individuals with intellectual disability diagnoses.

## Family Recruited Employee Program

In Imagine!’s Family Recruited Employee Program, an employee is recruited by a family to provide supports to a loved one. This allows families to recruit individuals they know and trust, creating a unique partnership among families, employees, and Imagine!.

In 2017-18, Imagine! supported **232** family recruited employees.

## Technology

Emerging technologies provide opportunities for people with intellectual disabilities to increase their independence and lead fulfilling, healthy lives. Imagine! has been at the forefront of testing and integrating technologies for more than two decades.



### REMOTE SUPPORTS

Thanks to a generous gift from Aaron’s Fund and Gale Boonstra, Imagine! has created a replicable demonstration project focused on ensuring the safety of people with intellectual disabilities while living independently or with limited supports in their communities. This technology allows for remotely locking doors, monitoring when someone comes to their doors, and providing alerts when an alarm is triggered. Remote supports can help to fill a huge gap that currently exists in services for adults with intellectual disabilities who are mostly independent and need some assistance to remain safe and self-reliant. Imagine! will share the results with state leaders to encourage the adoption of this technology into the service system.

### IMAGINECT

With generous funding from an anonymous donor, Imagine! developed a Smartphone app, Imaginect. This on-demand tool connects people with intellectual disabilities to workers who can complete specific tasks. Imaginect operates much like Uber, where workers can choose tasks and times that fit their schedules.

### CU COLLABORATION PROJECTS

Imagine! and the University of Colorado Engineering department have a long-standing collaboration. Each year, Engineering Professor Melinda Picket-May’s students have partnered with Imagine! to provide assistive technology for individuals we serve. Students form small groups and select projects that have been identified by Imagine! staff members as something that will meet the needs of a specific individual served by Imagine!. The collaboration has truly been win-win. The students get real, hands-on experience on a unique and challenging engineering task, and people served by Imagine! get a piece of adaptive equipment designed specifically for their needs.

### SMARTHOME TOURS

The Bob and Judy Charles SmartHome in Boulder opened in 2009, and the Charles Family SmartHome in Longmont opened in 2010. Monthly tours bring visitors from around town, around the country, and around the world. Imagine! has long promoted technology solutions that can support people in a variety of community living arrangements, and many solutions are demonstrated in these homes. More than 1,500 people have toured Imagine!’s SmartHomes.



# Awards and Achievements

## IMAGINE! EMPLOYEE HONORED FOR EXCELLENCE

In February, Alliance, a nonprofit, statewide association of Community Centered Boards (CCBs) and Program Approved Service Agencies (PASAs), held its annual I/DD Awareness Day Luncheon. Service agencies from all over Colorado were in attendance to celebrate their successes in supporting individuals with I/DD. As a grand finale to the event, Alliance handed out a Direct Service Professional (DSP) of the Year award, and **Imagine! employee Jason Kingsbury took home this prestigious award!**

Jason’s nomination noted: *“He has demonstrated a dogged advocacy for clients with intense and challenging behaviors. He has consistently modeled a sense of determined and graceful patience in those moments, even going so far as to educate members of the community with regard to how Imagine! supports those with significant behavioral challenges, and how these individuals deserve a space in the community as much as anyone else.”*

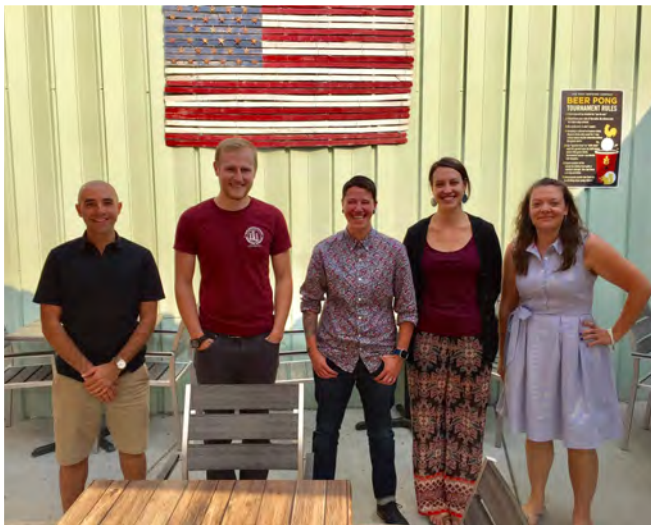


## IMAGINE! EMPLOYEE HONORED BY INTERNATIONAL ROTARY

In March, Imagine! employee Christopher DiRosa received the Paul Harris Fellowship Award through the Open World International Program of Rotary. Chris was recognized for his dedicated passion of serving individuals with disabilities.

## IMAGINE! LOOKS INWARD FOR LEADERS

2017-18 marked the 10th anniversary of Imagine!’s Leadership Development Group (LDG) program. The purpose of this program is to provide a coordinated platform that strategically develops talent within Imagine! to address the company’s leadership needs for the future. The program is designed to educate employee participants about the complexities of the organization and to assist management in learning about people with talent that may be good matches for leadership roles.



Each participant in the LDG gains a broad understanding of leadership skills and is provided the opportunity to apply their learning in various settings. Leadership skills and knowledge gained throughout the program are applicable in many aspects of the participant’s experiences.

# Volunteers Help Imagine! Thrive



412 volunteers served



12,311 hours of their time last year

## EAGLE SCOUT GIVES BACK

Monarch High School senior David Park chose to partner with Imagine! for his Boy Scouts Eagle Scout project. His sister, Gina, has been receiving services from Imagine! for over a decade. “Imagine! has given so much to Gina and our family that I wanted to give back,” said David. “They provided a platform to help Gina and that really struck a chord with me. She learned how to express her emotions better, helping us understand her needs.” David refurbished a deck at Imagine!’s adult day program site in Boulder. “My Scout Master suggested that this project would be too big and he recommended I pick something else. But I saw how badly it needed repair and felt that it would have the biggest impact on services at Imagine!.” David recruited 20 boy scouts and parents to help out.



## CAR WASH

Volunteers of all ages from Atonement Lutheran Church in Boulder washed our fleet of 86 vehicles. These vehicles are vital to Imagine!’s services, as we provide transportation to community activities amounting to approximately 750,000 miles a year. From a very young age, the volunteers recognize the positive impact they are making within their community.



## HOLIDAY GIFT DRIVE

During the holidays, thanks to the support and donations from 11 community partners and businesses, and countless donations from individuals, 308 children and adults with intellectual disabilities received holiday gifts. Imagine! relies on volunteers to help sort and distribute these gifts.





# Financial Highlights

### Consolidated Financials

The Developmental Disabilities Center doing business as Imagine! and Affiliates Financial Statements is comprised of Imagine!, the Imagine! Foundation, three Imagine! Housing Corporations (group homes), and the Imagine! Development Company. Imagine!'s audit and IRS 990 can be viewed online at [www.imaginecolorado.org/financial-information](http://www.imaginecolorado.org/financial-information).

### Net Income

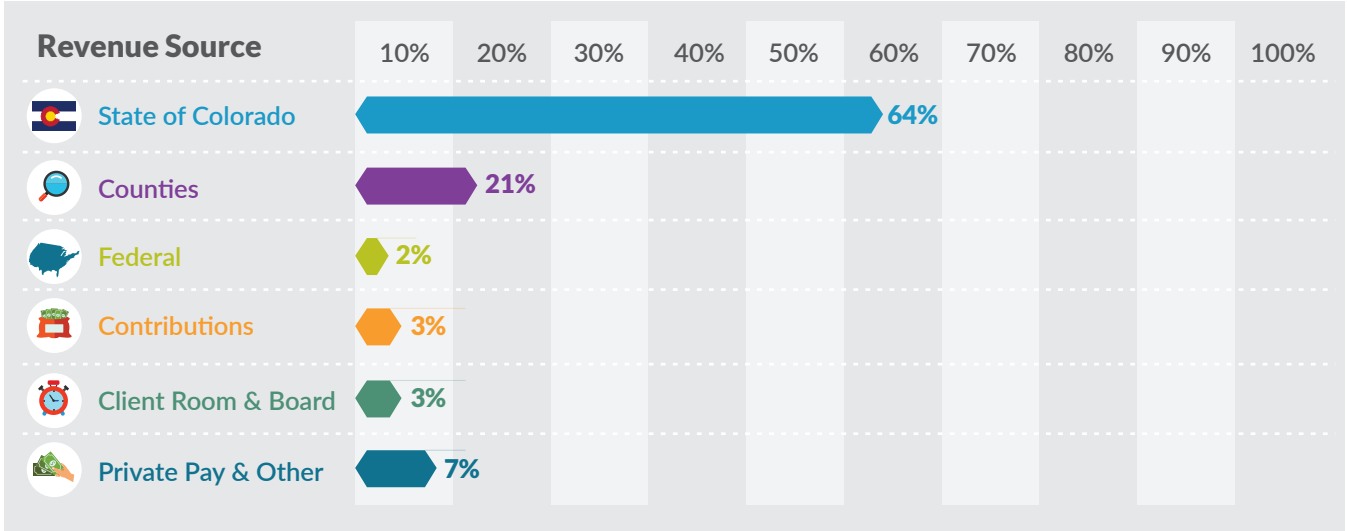
As directed by the Board of Directors, Imagine! budgets a 2% margin of revenue over expenses. Net Income was greater than 2% in the last two years because of higher grants and other fundraising, unanticipated revenue from the State, and earnings on investments. Net Income is used to invest in the organization with capital needs such as vehicles and facilities improvements, as well as to cover principal payments for debt service.

### Expenses

The Imagine! Foundation handles private fundraising for Imagine! and transfers the revenue to Imagine! on a quarterly basis. Foundation revenue and expenses are included in the consolidated financials and are one percent of Imagine!'s expenses. Management & General expenses account for eight percent. **Ninety-one percent of expenses go to programs.**

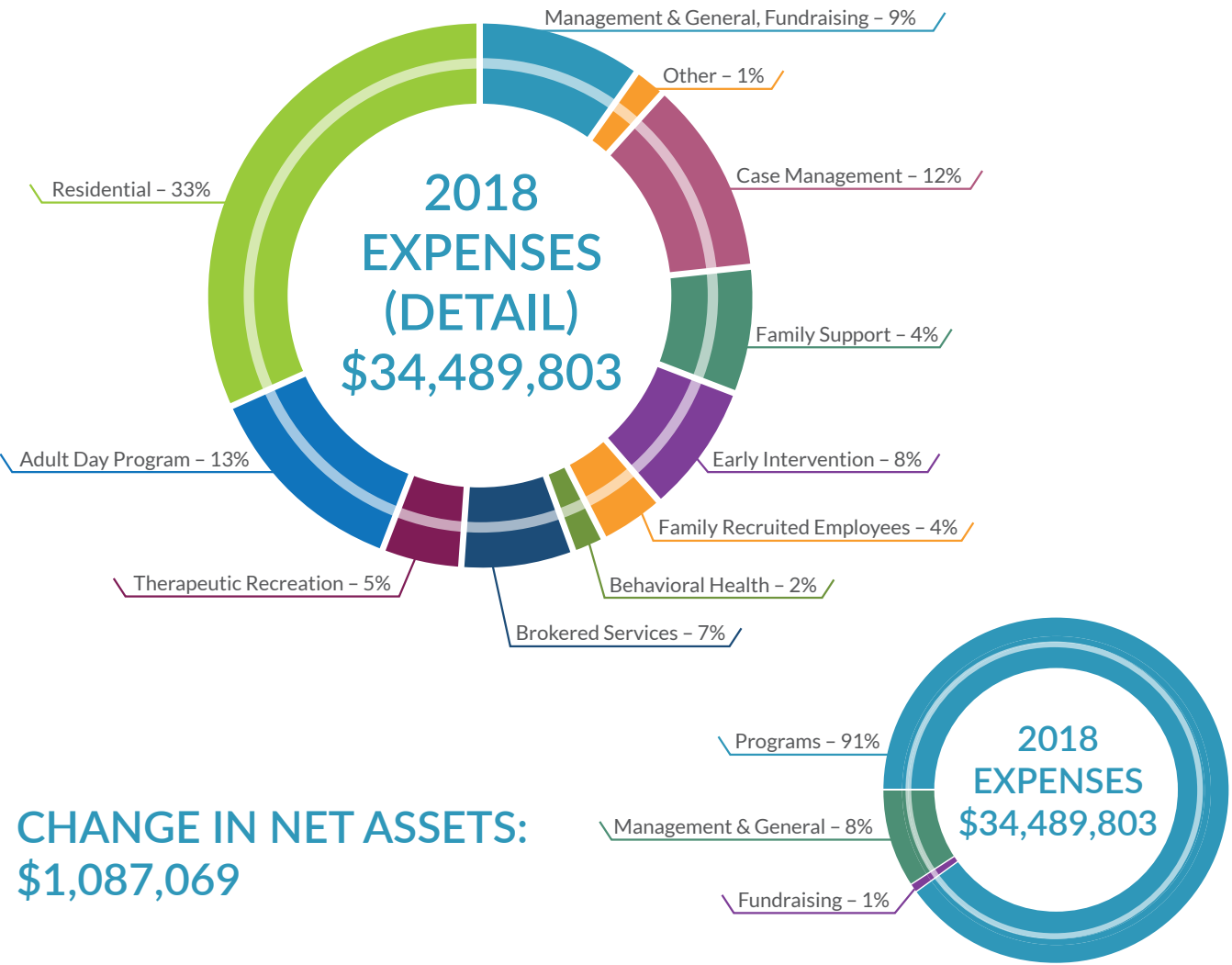
# Financial Highlights

## 2018 REVENUE \$35,411,567



## Developmental Disabilities Center doing business as Imagine! and Affiliates CONSOLIDATED STATEMENT OF FINANCIAL POSITION June 30, 2018 and 2017

ASSETS	2018	2017	LIABILITIES & NET ASSETS	2018	2017
Current assets:			Current liabilities:		
- Cash and cash equivalents	\$10,374,387	\$6,824,485	- Accounts payable and accrued expenses	\$2,392,974	\$2,039,868
- Certificates of deposit	1,995,115	998,568	- Deferred revenue	2,851,716	190,018
- Investments	1,570,190	1,388,157	- Current portion of long-term debt	165,000	279,836
- Accounts receivable	3,101,813	4,005,198	<b>TOTAL CURRENT LIABILITIES</b>	<b>\$5,409,690</b>	<b>\$2,509,722</b>
- Prepaid expenses & other	397,756	238,322			
<b>TOTAL CURRENT ASSETS</b>	<b>\$17,439,261</b>	<b>\$13,454,730</b>	Liability for pension benefits	1,105,424	1,181,131
Certificates of Deposit	498,786	497,096	Long-term debt, net of current portion	1,360,000	1,525,000
Prepaid benefit cost	852,070	762,472	<b>TOTAL LIABILITIES</b>	<b>\$7,875,114</b>	<b>\$5,215,853</b>
Beneficial interest in assets held by others	419,861	398,125			
Land, building and equipment, net	9,196,406	9,589,581	<b>NET ASSETS:</b>		
<b>TOTAL ASSETS</b>	<b>\$28,448,334</b>	<b>\$24,702,004</b>	Unrestricted		
			- Net investment in land, building and equipment	7,713,356	7,784,745
			- Undesignated	12,859,864	11,701,406
			<b>TOTAL NET ASSETS</b>	<b>\$20,573,220</b>	<b>\$19,486,151</b>
			<b>TOTAL LIABILITIES AND NET ASSETS</b>	<b>\$28,448,334</b>	<b>\$24,702,004</b>



CHANGE IN NET ASSETS:  
\$1,087,069



The Imagine! Foundation raises funds to support Imagine!’s innovative projects and to help fill current and anticipated gaps in government funding for its vital services. Since the Foundation’s inception in 2000, thousands of compassionate individuals, businesses, and foundations have contributed almost \$9 million to partner with Imagine! to serve people in our community who need supports.

We couldn’t do this work without you. Thank you for stepping forward generously. Your gifts tell us that **our community believes in the potential of all**. Thank you!



## Dear Friend of Imagine!:

The pages of this Annual Report are brimming with stories that highlight what is possible for the more than 4,000 people with intellectual or developmental disabilities who Imagine! serves. You should be aware, however, that there is another dimension of the Imagine! community. One that warms my heart.

So much of the positive impact that Imagine! has on our community is possible because of **you**. Whether you have volunteered your time, donated money, raised awareness in your own civic or family circles, or employed people served by Imagine!, you’re included in the Imagine! community. This spirit of volunteerism, generosity, and compassion is the greatest strength of our community, and it is why I am honored to be a part of this organization.

Thanks to you, the Imagine! Foundation had an extraordinarily successful year. Our Board Members have asked you for your support, and you’ve responded generously! **The total fundraising for FY2018 exceeded \$822,000 from 869 donors.**

The sold-out Imagine! Celebration featured a new venue (Westminster Marriott) and tremendous mission connection. I appreciate the efforts of our volunteers who made the event a rousing success, raising a record-breaking \$430,000.

Your generosity helped complete payment of mortgages on five residential sites and two SmartHomes, and provide substantial funding for Imagine!’s programs and services. The combined support of individuals, businesses, religious groups, civic clubs, foundations, event sponsors, and government entities help ensure that Imagine! *can create a world of opportunity for all abilities*.

Now that we have completed our goal of paying off the mortgages, the Imagine! Foundation will focus on important new goals. This year we will focus on making sure those properties are in tip top shape. Going forward, the Foundation will also focus on improvements in the services we provide through the creative implementation of technological innovations. This is exciting and game-changing work and we look forward to Imagine! continuing to be a national leader in this area.

Serving as President of this incredible organization is rewarding. The Imagine! Foundation’s volunteer board members are dedicated, caring, and generous. It is an honor and a joy to collaborate with our devoted and skilled staff, including Foundation Executive Director Patti Micklin, Development Coordinator Heather Sabo, and Grant Writer/Volunteer Coordinator Elizabeth Hill. These ladies guide our efforts so we can successfully support Imagine!’s work.

I am proud to share this Annual Report with you, and thank you for believing in everyone’s potential.



Sincerely,

President, Imagine! Foundation Board of Directors

## 2017 – 2018 Imagine! Foundation Board of Directors

**Don Brown**  
President

**Jana Petersen**  
Vice President

**Beverly Shaw**  
Secretary

**Alexander “Sandy” Brown**  
Treasurer

**Robert F. Charles, Jr.**  
Founder

**Richard C. Ackerman**  
Gale Boonstra

**Steve Bryant**

**John Creighton**

**Kathy Coyne**  
Emeritus

**Patrick Daly**  
Katie Hawkins

**Charles E. Holmes**

**George M. Karakehian**  
Emeritus

**Priscilla Slocum Lacy**

**Christopher Mabbitt**

**Pete Madden**

**John R. Mehaffy**  
Emeritus

**Walt Pounds**

**Leona Stoecker**  
Emeritus

**Patti Micklin**  
Executive Director





## The Imagine! Celebration

The 17th Annual Imagine! Celebration connected 500 generous guests to Imagine!'s mission of creating a world of opportunity for all abilities. Katie Hawkins, Imagine! Celebration Committee Chair, led the effort to ensure that guests experienced a memorable evening and left believing in the potential of all.

In a special video, the Gehr family shared the story of their son and his uncle, both of whom have intellectual disabilities. Their experiences demonstrate how far we have come as a society (thanks to organizations such as Imagine!) in offering opportunities for community living for people with intellectual and developmental disabilities. View the video at [imaginecolorado.org/mike](https://imaginecolorado.org/mike).



Thanks to the generosity of sponsors and sold-out crowd, we raised more than \$430,000! Funds supported all of Imagine!'s programs, with the special appeal emphasizing summer day camp and after-school activities.

### 499 GUESTS \$430,000 RAISED







# We Love Imagine! Donors!

## PLATINUM \$10,000 +

AEC Trust  
Anonymous (1)  
Don & Lorraine Freeberg Foundation  
Louise & Bob Dudley  
Kristin & George Karakehian  
Laura & Bill Koch  
NewMark Merrill Companies  
Linda & Walt Pounds  
Tebo Properties & the Tebo Family  
Bob Von Eschen  
Julie & Scott Von Eschen

## GOLD \$5,000-\$9,999

Sally & Sandy Bracken  
Laura & David Braddock  
Leslie & Sandy Brown  
Charles E & Carol Miller Family Foundation  
Walter Eberspacher  
Beth & David Fish  
Flood & Peterson Insurance  
Lynda & Bill Johnson  
Kathy & Dale King  
Knights of Columbus, Lafayette Council  
Heidi & Mark Leachman  
Natalie Hanlon-Leh & Chris Leh  
Rick Leichtweis  
Linda & Dick Livingston  
McElwain Family Foundation  
Laura & John Mitchell  
UPS Foundation  
Cinzia & Eric Wallace  
Janet Ward  
Wiland  
Mark Zentner

## SILVER \$2,500-\$4,999

Richard Ackerman  
Albertsons Companies Foundation  
Janan & Ron Alford  
Brian Bagley  
Boulder Community Health  
Tanya Kelly-Bowry & Chris Bowry  
Karen & Don Brown  
Virginia & Scott Brown  
Joe Butler

Bob & Judy Charles  
Kristen & Andrew Christie  
City of Lafayette  
Colorado Business Bank  
Community Foundation Serving Boulder County  
Julia Cuervo & Glenn Curry  
Melodie & Lou DellaCava  
Eide Bailly



Seven-year old **Mackie Ball** watched a video about Imagine!, and decided to donate her Tooth Fairy money to Imagine!. She told her mom it was, “Because there are kids with disabilities that don’t always get to do the things that I get to do.”

Elevations Credit Union  
Emerson Process Management  
Becky & Dennis Fase  
Jackie & Brent Friesth  
Devan & Robert Haas  
High Plains Bank  
Susan LaHoda  
Lin & Jim Loftus  
Longmont Community Foundation  
Alice & Pete Madden  
Justin McClure  
Medtronic  
Emily & Rob Miller  
Moov  
Motorola Solutions Foundation  
Sue & Michael Myers

Ginny & Steve Orndorff  
PDC Pharmacy  
Jana & Chris Petersen  
Carmen & Mark Sample  
Elaine Shannon  
Jill & John Sheldon  
Susan & John Sidwell  
Heidi Storz & Roque Ramirez  
Sunflower Bank

Trailhead Wealth Management  
Wendy & Ed Wassom

## BRONZE \$1,000-\$2,499

Anonymous (1)  
April Fund  
Lu Walters & Kent Arnold  
Autism Society of Boulder County  
Lisa Van Goor & Bob Bauers  
BCinteriors  
Jude Bea  
Benson Kerrane Storz & Nelson  
Wanda Betts  
Dana & Brad Bickham  
blue Federal Credit Union  
Boulder Area Alumnae Panhellenic

Boulder Plastic Surgery & IV  
Seasons Skin Care  
Broomfield Community Foundation  
Cain Travel Group  
Amy & Kevin Callahan  
Katie Hawkins & Dale Charles  
Russ Christiansen  
City of Louisville  
Citywide Banks  
Barb & Chris Clemens  
Jeanie & Brian Cleveland  
Colorado Financial Management  
Community First Foundation  
Craft Works Restaurants & Breweries  
Lynn & Ken Curtis  
Kim Cutler  
Janell & Pat Daly  
Beth & Bob Davis  
Design Mechanical Inc.  
Mary Dichtl  
Yvonne & Phil DiStefano  
Carolyn & Bill Doying  
Judy & Mark Emery  
First National Bank  
First Summit Realty  
FirstGiving  
Cheryl Flink  
Kathy & Dan Frank  
The Frisbie Family  
Judy & Jeff Gass  
Rachel & David Gehr  
Jeanne & Allen Ginsborg  
Guaranty Bank & Trust Company  
Nancy & Dennis Heagney  
Dianne Ladd & Bruce Holland  
Sally & Charles Holmes  
Suzanne & David Hoover  
Kaiser Permanente  
Gary Klein  
Bob Klutznick  
Knights of Columbus, Boulder Council  
Knights of Columbus, Longmont Council  
Robyn Kube  
Gayla & Pete Lindquist  
Liquor Mart  
Longmont United Hospital

Barb & Peter Loris  
Louisville Auto Supply  
Lucky’s Market  
Lynn & Helen Clark Fund  
Petrea & George Mah  
Cindy & Dave Manley  
Mary & Tom Martella  
Tasia & Tim Maxwell  
Randy McCall  
Roz & Harvey Micklin  
Patti & David Micklin  
Mile High United Way  
Mutual of Omaha  
Kevin Nelson  
DeMarie Niedling  
Angie & Darrell Nivens  
Northrop Grumman Corporation  
Julie & Doug Oldfield  
Trish Murray & Mike Page  
Amy & Rajul Pandya  
Kathy & Brad Pedersen  
Polk Family / Pedestrian Shop  
Anne Marie & Paul Pewterbaugh  
Wendy & Jon Reynolds  
Maria & Art Richmond  
Catherine & William Rogers  
Julie & Jerry Rudy  
Martha & Jerry Sabin  
Sample Supports  
Bruce Sanders  
Amanda & Dave Sanderson  
Ursula & John Scarano  
Kim & Todd Schulte  
Sentinel Management  
Barbara & Tom Miller  
Marie & Chuck Sonnen  
Stewart Title of Colorado  
Leona & Bernie Stoecker  
April & Walt Stone  
Diane & Richard Vandermeer  
Lynne & Rick Waidler  
Western Disposal Services  
Patti Ann O’Brien & Jim White  
Susan & Tom Wilcox



Transportation is a cornerstone of being able to provide services in the community. The **Don and Lorraine Freeberg Foundation** understood this, and donated funds to purchase a Toyota Sienna van for Imagine!’s summer day camp, after-school, and weekend programs.

## ASSOCIATE \$500-\$999

Judy & Rob Allan  
Renate Alpert  
Cynthia & Charles Anderson  
Sigute & Rob Andrew  
Anonymous (2)  
Apollo Mapping  
Kristin Swenerton & Greg Atkinson  
Beth Leibo & Whitney Blair  
Helen Bosley  
Shannon & Steve Bryant

Linda Cain  
Shauna & Tom Callahan  
Dianne & Bob Charles  
Delia & Rodger Creel  
Claudia & Scott Culley  
Pat & Chris Current  
Tam & Ken Dalle-Molle  
Meagan & Adrian D’Angelo  
Mary & Tom Deany  
Judy & Louie Delaware  
Mia & Clay DellaCava  
Roger Dickens  
David Edwards  
Audrey & Andrew Franklin  
Jeff Glentzer  
Lisa & Doug Granat  
Jennifer Burton & Don Haddad  
Katy & Tim Haverstick  
Steven Higgins  
Sandra & Jeff Hirota  
Import Coachworks, Ltd.  
Carolyn & Sam Johnson  
Karen & Jon Jones  
Karen & David Kalis  
Diana & Rich Lirtzman  
Lockton Investment Advisors  
Longs Peak United Methodist Church  
Joan & Bob Luxner  
Chris Mabbitt  
Ariel & Cliff MacTavish  
Ursula & Tom Mahoney  
Meg McClellan & Jim Barlow  
Carol Ann & John Mehaffy  
Barbara & Tom Miller  
Vicki & Tom Miller  
Haila & Chris Mirtio  
Kerry & Brian Musfeldt  
Melanie & Pete Nelson  
Karen & John Nevins  
Kathy & Rick New  
Barbara & Harry Newman  
Rebecca & Matt Novinger

Daniel Parise  
Deb & Wes Parker  
Suzanne Pelletier  
Whitney Pinion  
Prime Industries  
Leah & Darrell Quam  
Carla & Sam Rapp  
Lorie & Steve Roch  
Marcia & Mark Sadler  
Salon Nové  
Leann & Charles Sander

Deb & Doug Sandersen  
Kim Sems  
Beverly & Gene Shaw  
Sterling-Rice Group, Inc.  
Sara & Sam Taylor  
Anne & Cary Tengler  
Michele & Chris Terranova  
Jessie & Kyle Thompson  
Carl Vertuca

Kevin Harding  
Cathy Hawley  
Jennifer Haxton  
Martha Heimbaugh  
Elizabeth Hill  
Anne Holmes  
Jillian & Greg Horner  
Beth & Tom Huffman  
Kristy & Neil Kearney



**NewMark Merrill Mountain States**, owner of the Village at the Peaks shopping center in Longmont, demonstrated their commitment to an inclusive community by making a significant contribution to Imagine!’s children’s programs.

Jeanne & Danny Wade  
Jan Walden  
Susan White  
Heather & David Wier  
David Williams  
Hunter & Andy Wright  
Marcia & Dave Wyatt  
Lo Anne Zentner

## SUPPORTER \$250-\$500

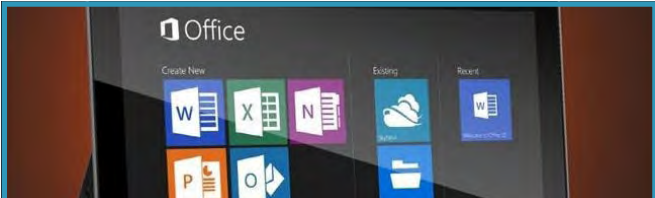
James Albertson & Therese Schueler  
Anna & Phil Amos  
Anonymous (3)  
Ken Atkinson  
Kelly & Bill Atteridg  
Andrea & Jim Baer  
Monica & Randy Baham  
Laura & Garret Ball  
Mary & Jay Balzer  
Mary & Tim Black  
Cathy Bodine  
Rachel Bowles  
Carolyn Sanders & Eric Boysen  
Jane Brennan  
The Britton Family  
Sue Capitelli  
Rhonda & Gary Cardow  
Anne & Peter Carpenter  
Zachary Cassidy  
Charles Schwab in Boulder & Fort Collins  
Carol & Jerry Chesser  
John Clarke  
Karen Collins  
Colorado Rural Workforce Consortium Leadership Team  
Michelle Conkey-Sajban & John Sajban  
Kathy Coyne  
Christina Craig & Charlie Swarts  
Sallie & George Duvall  
Korina Bersentes & Brian Egaas  
Jan & Craig Fisher  
Mary & Tim Fountain  
Gretchen & Vic Fruehauf  
Miles Gerson  
Judy & Darrell Giebler  
Becca & Sean Gingerich  
Mimi & Jon Goodman  
Ken Hackbarth  
Beth Hall  
Paula & Chic Hall

Brooke & Tim Keefe  
Dan Kingdom  
Eva Klemens  
Hilary & Jordan Kunz  
Alaine & Joey Lerner  
Andrew Littman  
Andrew Lollback  
Longmont Rotary Charity Fund  
Patricia Lowe  
Cathy & Greg Ludlow  
Karissa & Dan Mackin  
Ally MacLean  
Sean Maher  
Marianne Martinez  
Laura & Chris McDonald  
Marcia & Scott McMichael  
Chris McVay  
Ann Marie & Keith Michalkewicz  
David Millhiser  
MTech Mechanical  
Daniel Murphy & Barbara Abrahams  
Jackie & Rick Nelson  
Amy Nilsen  
Dan Norblom  
Norwood Architecture  
Kady Offen-Rovtar  
PASCO  
Lea Anne Paskvalich  
Gloria & Gerry Phillips  
Molly & Bryan Pieper  
Zoe Polk  
Jim & Kathy Pollicita  
Dana & Dave Query  
Jody & Doug Robinson  
Teri Romero  
Joe Rudy & Leslie Rothman  
Sakyong Potrang  
Cheryl Barr & Ron Sandgrund  
Peter Schild  
Julie Schumann  
Sandy Green & Dave Shuey  
Caroline Siegfried  
Gail & Jerry Sloat  
St. Vrain Valley School District  
Caroline & Peter Storz  
Brenda Summers  
Dennis Andrews & Bebo Tharp  
Claire & Mike Tindall  
Marijo & Steve Tinlin  
Adrianne & Chad Tracy  
Eileen & Mel Vanek  
Pat & Paul Vero



Alice Vienneau  
Lori Vienneau  
Kendall & Grant Von Eschen  
Lisa & Mike Wade  
Karen & Doug Ward  
Victoria Warren  
Alice & Greg Wellem  
Chuck Wellman  
Tiffany & Emma Sabine  
& Sterling Wind  
Julie & Chad Young  
Jane & James Young  
Pam & Natty Zola  
Laura Koby-Zuckerman  
& Budd Zuckerman

June & Steve Blouch  
Mary Blue  
Ellen & Paul Boehm  
Hayley Boggs  
Janis Bohan  
Gale & Tim Boonstra  
The Borthwick Family  
Elisa & Dave Bosley  
Jim Bowers  
Merna & Carl Brady  
Laura Reath & Matt Brady  
Ruth Brand  
Heather & Matthew Brandt  
Carly & David Brantz  
Judy & Jim Brantz



Microsoft Philanthropies donated over \$650,000 in Microsoft software to Imagine!. By not having to purchase these software licenses, Imagine! is able to deliver more services to the 4,200 individuals with intellectual disabilities living in Boulder and Broomfield counties.

FRIEND \$1-\$249

Enid & Mark Ablowitz  
Jeff Abrams  
Kevin Afflerbaugh  
Alma & Richard Alber  
Amy Alexander  
Marjorie Alexander  
Jan & Ken Alford  
Chad Almond  
AmazonSmile Foundation  
Mary Anderies  
Diane Anderson  
Anonymous (15)  
Anne Arnold  
Joel & Dub Ashner  
Rachel Audette  
Bella Auger-Larsen  
Weslyn Austin  
Cecil Macgregor & Damaris Ayuso  
Melissa & Josh Bachrach  
Amanda Bagnato  
Rick Baker  
Monica & Bill Baldwin  
Emilio Balius  
Mackie Ball  
Ball Corporation  
Darina Barciak  
Ruth Jacoby & Doug Barnert  
Kimberly & Bradley Barnett  
Joie Siegrist & Thomas Bartel  
Vicke Batzner  
Charlotte Bell & Jeremy Broestl  
Robin Benway  
Matthew Benz-Whittington  
Jeremy Bergener  
Sandra Berger  
Kaitlyn Bergeron  
Margaret Berglund  
Erica Berridge  
Amber & Christian Billington  
Christopher Black  
R Shawn Bleam  
Emily & Paul Bliss

Peter Braun  
Jim & Jen Bray  
Wendy Breitenfeld  
Yvonne, Corry, CeCe & Edie Bridge  
Kristin Brousseau  
Barbara Kammer & Kent Brown  
Neila & Mark Brownstein  
Sherry & Hal Bruff  
Nancy & Buck Buchanan  
Janet Bucher  
Carolyn & Joel Buck-Gengler  
Buffalo Lock & Key  
Susan Burd  
Alicia Burdick  
Tabitha & Marshall Burgtorf  
Maryann & Paul Bursiek  
Amanda & Wyatt Burton  
Catherine Camacho  
Hope Cardoza  
Jennifer Carr  
Diane Carroll  
Kathy Carroll  
Eben Carsey  
Sara Castellano  
Alexa Cataldo  
Jenna Catalona  
Michelle Cearley  
Linda & Joel Champion  
Belinda Chirinos  
Marguerite & Carlo Ciaravino  
Elena Ciaravino  
Jessica Clarke  
The Clexton Family  
Tim Clifford  
Community Shares of Colorado  
Kay & Ken Conger  
Kathy Coniway  
Susan Connelly  
Sherry & Doug Conner  
Emmy Conroy  
Joni & John Creighton  
Mardelle & Bert Crist  
Ottilie & Monica Czajkowski  
Patricia Dance

Marissa Daniel  
Peggy Darrah  
Joan Davis  
Robin & Walter Davis  
Sue Deans  
Diana & Joe DeBrohun  
Nancy Deklyn  
Sheila & Matt Derrington  
Sheila Dexter  
Jean & Charlie Dinwiddie  
Barbara & Daniel Disalle  
Beth & George Dooneief  
Brenna Dowdy  
Elisha & Scott Doyen  
Fran Dugan  
Debbie & Duane Duggan  
Megan & Aaron Edrington  
Olivia Edwards  
Ruth Edwards  
Diane Egner  
Penny Eppers  
Emilie Eslick  
Martha C. Evans  
Marianne Falk  
Jennie & Joshua Feiger  
Arielle & Bruce Feistner  
Jessica & Allen Feld  
Kim Felton  
Lisa Fiero & David Day  
Stacie & Greg Fieth  
Bob Fiore  
Tina Fisbeck  
Rob Fishman  
Dana Flitcraft  
Wendy Breitenfeld  
Heidi & Mike Foote  
Judy & Don Forkner  
Diana Forrest  
Kay & Michael Forsythe  
Jan & Larry Foster  
Dan Fox  
Darlene & David Foy  
Heather Frostman  
Doug Fuhr  
Susan & Bob Gabriel  
Galatoire's Restaurant  
Deb Gardner  
Jessica Gaylord  
Katherine & Oliver Gerland  
Danielle Gianola  
Michele Giggey  
Miriam Gilbert  
The Gillespie Family  
Courtney Gimeno  
Golden Nuggets Kiwanis  
Sharon Golden  
Bill Goodacre  
Kathy Goode  
Jennifer Graham  
Stephanie Grainger  
Andrea & Tom Grautski  
Gwen & Eric Gray  
Cathy Faughnan & Dave Green  
Megan Grimm  
Dominique Guillen  
Allyson & Todd Gullette  
Christine & Larry Haak  
Haddon, Morgan & Foreman  
MacKenzie Haering  
Judi Halbert  
Kelly Halverson  
Karen Hamilton  
Chris & Rob Hannagan  
Susan & Alan Hanson  
Wendy Hartman-Thomas

Ellen Marshall & David Harwood  
Lori Havatian  
Michaela Hayes  
Judy & Jim Heinze  
Deborah & David Heitman  
Governor John Hickenlooper  
Kim Hills & Bob Evans  
Liz & Jon Hinebauch  
Terry & Fred Hobbs  
Jill Hobson  
Cynthia & Richard Hoge  
Joan & Ron Hollenback  
Donna Holmes  
Kylie Holmgren  
Horizons K-8 School  
Jan & Paul Hoskins  
Jeff & Tresl Houpt  
Ruth Howe  
Don Humphrey  
Jonathan Hurst  
IBM Corporation  
Diane & Eduardo Illanes  
Bryce Isaacson  
Shimon Israily  
Faiza Issa  
Marilyn & Ken Jahner  
Jeffrey K. Abrams Architect  
Jannelle & Mark Johnson  
Mary Anne & Richard Johnston  
Susan Jones  
Elizabeth Zentner & James Joque  
Kathy Kaler  
Thomas Kammer  
Beth & Scott Kanemoto  
Fran & Kent Katnik  
Terri Keller  
Carol & Tom Kent  
Alexis Khan  
Syd & Marty Kiebert  
Ellie & Don King  
Lauren & Stuart Kingsbery  
Walter Kingsbery & Jane Christman  
Marty Kinsley  
Andrea Kintop  
Maria Klickna  
Cristen Klute  
Knights of Columbus,  
St. Louis Council  
Lenna & Jon Kottke  
Michelle & Joel Kralj  
Kathy & Roy Krughoff  
Priscilla & John Lacy  
Ethan LaHoda  
Nancy & Frank Latino  
Charlene Laughlin  
Anastasia & Bob Lawhead  
Marie Leblanc  
Sora Jang & Jong Lee  
Calvin Legh



For the third year in a row, Louisville Cross Fit gym, MOOV, hosted a "Kettlebells for Christmas" event, which raised \$3,407 for Imagine!.

Connie & Ed Lehman  
Violet Lehman  
Barbara & Robert Leutwiler  
Amber & Brian Lewandowski  
Kerry Lightenburger  
Pat & Eldon Lindeman  
Joy Linfield  
Rita & George Liu  
Julie Locke  
Debbie & Tom Lockwood  
Linda & Mark Loewenstein  
Richard Lowe  
Noah & Eli Lowrey  
Dianne & Jack Luberda  
Stephanie MacAlpine  
Barbara & Craig MacCambridge  
Kathy & Nick Madsen  
Maria Maestas  
Shelley Sheppeck & Dan Mahowald  
Sarah & Tim Manning  
Colette Marie  
Joan Martin  
Tara Martin  
Jacob Martinez  
Linda & Richard Martyr  
Amy & Gene Marx  
Mikki & Lorne Matheson  
Krista Matthes  
Cindy Matthews  
Lou & Gary McClelland  
Janis McCormick  
Paula McCormick  
Edwin McDowell  
Kara & Mike McDowell  
Nick McDowell  
Susie & John McFetridge  
Anita & Cormac McGann  
Marilyn McIntosh  
Liza & Burton McKenzie  
Helen McKeown  
Rebecca & Mark McLean  
Pat & Gerry McNutt  
Alex & Peter McNutt  
Glennys & John McPhilimy  
Alison Meagher  
Janet Meinhold  
Patty & Doug Meneley  
Pam Menert  
Ellie & Ed Merchant  
Pat & Tom Metz  
MGM & United Artists Services  
Athena & Gary Mills  
Cirrellda & Jack Mills  
Connie & Andy Minden  
Virginia Mitchell  
Michelle Moffatt  
Jamie & Steven Mondek  
Monique, Marek & Maarten Van Alstyne  
Shirley Morck  
Julie Morrandez  
Jack Morris  
Melanie & Jon Morrow  
Agnes Moser  
Marcia & Ed Muggli-Osborn  
Lucy Mwangi  
Jeanne & Jim Mytton  
Cynthia Navarrette  
Kathy & Gregg Near  
Jeanie Valentine  
Barbara Nevins  
Cindy & Dwight Newell  
Joshua Nims & Esther Brown  
Gabrielle Norton  
Steve Norwood  
Connie & Gary Nowlan

Isabella & German Nunez  
Corin O'Connell  
Kurt & Kathleen O'Donnell  
Kendall Odorizzi  
Stephanie & Dan Ohlsen  
Jan Keenan & Dick Olson  
Sandra Owens  
Dona & Dick Padrnos  
Sandy Paillet  
Sally & Mike Panis  
Susan Paulson  
Brenda & Shane Pearson  
Kit & Phil Peiffer  
Erna Maj & Bobby Pelz  
John Penczek  
Rebecca & Mark Pepin

Ryan Elementary  
Lynne Ryan  
Heather Sabo & Derek Webb  
Susan & Robert Sahn  
Jenna Sallee  
Lorena Sanchez  
Mia Sanchez-O'Dell  
Sanderson Law PC  
Kathy & Mike Sandstrum  
Nancy Goldaper & Garry Sanfacon  
Galen Scheidenhelm  
Michele & Ken Schipper  
Ed Schlichting  
Jeanne Schmid  
Anne & Peter Schmid  
Jeff Schmidt, Ph.D.

Esthela Swisher  
Fred Tabak  
Malinda Tackman  
Tasha & Tom Tadewald  
Shea Tanis  
Barbara & John Taylor  
Denise & Todd Tenge  
Katie Torres & Paul Terhaar  
The Philoptochos Society of  
Sts. Peter & Paul Greek  
Orthodox Church  
Sue & Scott Thomas  
Victoria Thorne  
Mathias Thurmer  
Eric Todd  
Barbara Trager  
Julie Tu  
The Tumblin Family  
Andorra Turner  
Chantelle Tweten-Crumbliss  
Jessica & Jeff Tyler  
Pat & Rick Uhler  
Jeanie Valentine  
Michael Van Allen  
Michele & Robert Van Pelt  
Melissa & Damon Vangelis  
Stephanie Veck  
Jim Vetrick  
Kent Vogel  
Janine & Andrew Volkmann  
Marilyn & Remsen Voorhis  
Rosalie & Bill Vorlage  
Terry & Jim Vratny  
Mary & Rick Waddell  
Lori & Rich Waidler  
Sophie & Jack Walker  
Cindy & Steven Wanner  
Jana & Tom Ward  
Water Pik  
Lenore Weissberg  
Scott Wendelberger  
Carol & Don Werthman  
Tim West-Heiss  
Stephany & Bruce Westhusin  
Thelma Whitaker  
Suzanne Whitman  
Megan Wieck  
Wild Birds Unlimited  
Jennifer Wilger  
David Wilson  
Donna Wolford  
Linda & Michael Wood  
Marsha & Wayne Wood  
Renate & Bill Wood  
Sharon Woodworth & Danny Polovin  
Lynn Wysolmierski  
Yvonne Yancey  
Kay Yeagley  
Glenn Young  
Jaye & Bill Zessar  
Jamie Zimenoff  
Jane & Wayne Zirkin  
Robin & Bob Zucker  
Silvija Zvirblyte

GIFTS IN TRIBUTE

In honor of Lisa Abrams  
Jeff Abrams  
In honor of Richard Ackerman  
Andrew Littman  
In honor of Allie Balzer  
Ellen and Paul Boehm  
In honor of Matt Barnert  
Ruth Jacoby and Doug Barnert  
Kathy Kaler



Through her love of others, Kylie Angulo convinced her school to donate the proceeds of their fundraiser to Imagine!.

Janese & Aaron Petuchowski  
Robin Phillips  
Grace & Don Pierce  
Pitter Patter Children's Boutique  
Ellie & Harry Poehlmann  
Lauren Polk Brown  
Dianne Primavera  
Barbara Pringle  
Cassandra Radcliffe  
Jackie Ramaley  
Brooke Rambold  
Cheryl & Vern Randal  
Eva Raschke  
Aaron Rask  
Jan & Jon Rasmussen  
Gail & Phillip Raznick  
Bonnie & Charles Re  
Sue & Jim Rector  
Dennis Reed  
Liz & Jay Reed  
Adele Reester  
Beth & Ed Reichstein  
Allen Richardson  
Allie & Bob Richardson  
Carol Riggs  
Colette Robertson  
Laurel Rochester  
Phyllis Rock  
Shana Rogers  
Gay & Charles Rohrer  
Laura Roland  
Sarah Rollins  
Dale Rose  
So Rosenblum  
Michael Rosenzweig  
Susan Rosewell Jackson  
Chris & Dave Ross  
Cherie & Norman Ross  
Susan Routt  
Elizabeth Royce  
Maryann & Mike Ruck  
Chad Russell

Erin Schram  
Rachel Schulman  
Mona & Herold Schultz  
Patricia Schumann  
Schwenke & Associates  
Janna Schwind  
Patrick Scott  
Seahorse Safe & Lockout Service  
Susan Seiler  
Lois & Tim Sheahen  
Patti Showman  
Deborah Simmons  
Mary Simonson  
Erika Skewes  
Deborah & Jeffrey Skovron  
Dorothy Reed-Sleeper & Joe Sleeper  
Renata & John Smathers  
Sarah & Jeremy Spencer  
Sondra Bland & Bob Spencer  
Roslyn Squires  
Danielle Stack  
Erica Stamm  
Shirley Stanosheck  
Starway International  
Gary Stebick  
Julie Steel & Kenny Meyer  
Casey Sterrett  
Linda & Jim Stinson  
Jane Stockebrand  
Amy & Jeff Stoehr  
Hilary Stojak  
Bill Storing  
Susan & William Stuller  
Caleb Sueverkruepp  
Sarah & Robert Sutherland  
Judith Sutter  
Jeannette & Scott Sutton  
Sharon Svendsen & John Coburn  
Barb & Art Sward  
Bob Swartley  
Alice Swift

*In memory of Bob Boonstra*  
Judy and Jim Brantz  
Linda and Mark Loewenstein  
*In honor of Hannah Bozzay*  
Deb and Doug Sandersen  
*In honor of Bob and Judy Charles*  
Lynne and Rick Waidler  
*In honor of Joni and John Creighton*  
Sallie and George Duvall  
*In memory of David Cristol*  
Roz and Harvey Micklin  
*In honor of Ryan Daly*  
Janell and Pat Daly  
*In honor of Elisha and Scott Doyen*  
Carolyn and Bill Doying  
*In honor of Stephen Dudley*  
Louise and Bob Dudley  
*In honor of Brett Elkins*  
Anonymous  
*In memory of Kelly Emery*  
Janan and Ron Alford  
Anonymous  
Gale and Tim Boonstra  
Yvonne, Corry, CeCe &  
Edie Bridge  
Neila and Mark Brownstein  
Rhonda and Gary Cardow  
Colorado Rural Workforce  
Consortium Leadership Team  
Michelle Conkey-Sajban  
and John Sajban  
Dayspring Staff  
Lisa Fiero  
The Gillespie Family  
Diane and Eduardo Illanes  
Faiza Issa  
Karen and David Kalis  
Anastasia and Bob Lawhead  
Dianne and Jack Luberda  
Virginia Mitchell  
Brenda and Shane Pearson  
Linda and Walt Pounds  
Jan and Jon Rasmussen  
Joe Rudy and Leslie Rothman  
Julie and Jerry Rudy  
Deborah and Jeffrey Skovron  
Julie Steel and Kenny Meyer  
Stephanie Veck  
Cindy and Steven Wanner  
Sharon Woodworth and  
Danny Polovin  
*In honor of Gabe Eskin*  
Nick McDowell  
*In honor of Mike Gehr*  
Karen Hamilton  
Alice Swift  
*In honor of Jackie Ginsborg*  
Jeanne and Allen Ginsborg  
*In memory of Jeannette A. Gonzalez*  
Janis Bohan  
*In honor of MacKenzie Houpt*  
Jeff and Tresi Houpt  
*In memory of James Hall*  
Pat and Chris Current  
*In memory of Donald Hamilton*  
Joe Rudy and Leslie Rothman  
*In honor of Patrick Hoffman*  
Kathy Coyne  
*In honor of Charles Holmes*  
Robyn Kube  
*In memory of Bruce Johnson*  
Jim Bowers  
Mikki and Lorne Matheson  
Janet Meinhold  
Dennis Reed  
Sakyong Potrang

*In memory of Capt. and  
Carl D. Kilhoffer*  
Julie and Jerry Rudy  
*In Honor of Aaron Lea and Family*  
Starway International  
*In Honor of Kyle Luxner*  
Joan and Bob Luxner  
Mary and Tom Martella  
*In honor of Colette Marie*  
Elena Ciaravino  
Patti Micklin  
*In memory of Mary Martella*  
Barbara and Daniel Disalle  
*In memory of Tom Martella*  
Water Pik, Inc



**Barbara and Harry Newman** set up a monthly donation to Imagine!. They are grateful to Imagine! for the services their niece, Emily, receives, and see ongoing donations as a way they can make a difference in the lives of others.

*In honor of Jennifer Martinez*  
Marianne Martinez  
*In honor of the Mathews Family*  
Marjorie Alexander  
*In memory of Sarah McInroy*  
Diane Carroll  
*In honor of Emily Micklin*  
Sandra Berger  
Heidi and Mark Leachman  
*In honor of Christopher Miller*  
Jill Hobson  
*In memory of Billy Montgomery*  
Charlene Laughlin  
*In memory of David Mudge*  
Barb and Chris Clemens  
*In honor of Conner O'Donnell*  
Kurt and Kathleen O'Donnell  
*In memory of Quinn Paulson*  
Susan Paulson  
*In honor of Hunter Petersen*  
Anita and Cormac McGann  
*In honor of Robin Phillips*  
Phyllis Rock  
*In memory of Eric Poehlmann*  
Ellie and Harry Poehlmann  
*In honor of Cari Pounds*  
Jan and Paul Hoskins  
*In memory of Georga Reiss*  
Anonymous  
Joel and Dub Ashner  
Emilio Balias  
Gale and Tim Boonstra  
Janet Bucher  
Beth and George Dooneief  
Rob Fishman  
Galatoire's Restaurant  
Judy and Jeff Gass  
Andrea and Tom Grautski  
Syd and Marty Kiebert  
Amy and Gene Marx  
Janis McCormick  
Roz and Harvey Micklin  
Patti and David Micklin  
Michelle Moffatt

Marcia and Ed Muggli-Osborn  
Sandy Paillet  
Janese and Aaron Petuchowski  
Lynne Ryan  
Michele and Ken Schipper  
Rachel Schulman  
Susan Seiler  
Leona and Bernie Stoecker  
Lenore Weissberg  
Glenn Young  
Robin and Bob Zucker  
*In memory of Elizabeth Royce*  
Beverly and Gene Shaw  
*In memory of Isabelle Rusk*  
Mary Anne and Richard Johnston

*In Honor of Beverly and Bill Sabin*  
Martha and Jerry Sabin  
*In honor of Matthew Sadler*  
Marcia and Mark Sadler  
*In memory of Gert and  
Bill Sandgrund*  
Cheryl Barr and Ron Sandgrund  
*In honor of Beverly and Gene Shaw*  
Sallie and George Duvall  
*In honor of Alyssa Tumblin*  
Melissa Tumblin  
*In memory of Aaron Tuneberg*  
Andrea and Jim Baer  
*In memory of Jackson Uris*  
Robin Phillips  
*In honor of Colene Van Winkle*  
Erna Maj and Bobby Pelz  
*In memory of Jerry Waxler*  
Roz and Harvey Micklin  
*In memory of Lisa Webb*  
Diana Forrest  
*In honor of Matthew Wood*  
Cheryl Pricone and John Bradin  
*In honor of Jim Zentner*  
Mark Zentner

**IN-KIND GIFTS**

**IN-KIND PLATINUM \$10,000 +**  
Judy and Jeff Gass  
Microsoft Corporation

**IN-KIND GOLD \$5,000-\$9,999**  
Leslie and Sandy Brown  
Goodacre & Company Real Estate  
Kristin and George Karakehian  
Zoe and Terry Palmos  
YMCA of Boulder Valley

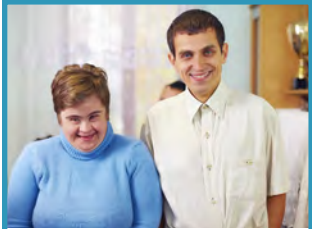
**IN-KIND SILVER \$2,500-\$4,999**  
African Eyes Travel

**IN-KIND BRONZE \$1,000-\$2,499**  
Breakthru Beverage Colorado  
Karen and Don Brown  
Cain Travel Group  
Jackie and Brent Friesth  
Susan and Bob Gabriel  
Patricia Gill  
Hazel's Beverage World  
Laura and Bill Koch  
Purple Sage  
Stephen Tebo  
University of Colorado  
Athletic Department

**IN-KIND ASSOCIATE \$500-\$999**  
Janan and Ron Alford  
At Your Service  
Big Red F Restaurant Group  
BRU handbuilt ales & eats  
Capital Sports Advisors  
Kristen and Bill Cassel  
Fall River Village  
L.I.D. Landscapes  
Left Hand Brewing Company  
Liquor Mart  
Barbara and Craig MacCambridge  
Magic Maids Cleaning Service  
McGuckin Hardware  
Jacob Micklin  
Morrell Printing Solutions  
Roy Parker  
Prime Industries  
River and Woods  
Rueben's Burger Bistro  
Sage and Savory Catering  
Sanitas Skincare / Cowgirl Skincare  
Smoker Friendly  
Southwest Airlines  
St. Julien Hotel & Spa  
Walters & Hogsett Fine Jewelers

**IN-KIND SUPPORTER \$250-\$500**  
Richard Ackerman  
BackJoy Orthotics  
Barbara & Company  
Beeriodic Enterprises  
Boulder Country Club  
Brain Balance  
Charles Schwab in Boulder &  
Fort Collins  
Comedy Works  
Craft Works Restaurants &  
Breweries  
Eldora Mountain Resort  
Linda Sole Faul  
Gebhardt Automotive  
Annie Gray  
Isle Casino Hotel  
Jeffrey K. Abrams Architect  
Jennie Kopf Catering  
JLounge  
KONG Company  
Lake Valley Golf Club  
Heidi and Mark Leachman  
Longmont Florist  
Louisville Vacuum & Sewing  
Lovin' Longmont  
LYFE Kitchen  
Cheryl McDonald  
OZO Coffee Company  
Peaceful Valley Lodge &  
Guest Ranch  
Pedestrian Shop  
Jana and Chris Petersen  
Sturtz & Copeland Florist &  
Greenhouses

The Oxford Hotel  
Vilona Studios  
Mike Yeats  
  
**IN-KIND FRIEND \$1-\$249**  
740 Front - An American  
Dining Saloon  
Abo's Pizza  
Acupuncture Clinic of Boulder  
Alpine Modern Shop  
AMC Flatiron Crossing 14  
Anders Ruff Workshop  
James Anderson  
Arcana  
Art Cleaners  
Arvada Center for the Arts  
Avery Brewing Company  
BC Interiors  
Biscuit Bar  
Black Diamond Restaurant &  
Tap House  
Bob L. Burger Recreation Center  
BolderBOULDER  
Boulder Beer  
Boulder Bookstore  
Boulder ChopHouse & Tavern  
Boulder Cleaners  
Boulder Cork  
Boulder Ensemble  
Theatre Company  
Boulder International Film Festival  
Boulder Philharmonic Orchestra  
Boulder's Dinner Theatre  
Brewers Association  
Virginia and Scott Brown  
Buenos Tiempos  
Buffalo Lock & Key  
Buffalo Wild Wings Grill & Bar  
Button Rock Bakery  
Carrabba's Italian Grill  
Center for Spiritual Living -  
Boulder Valley  
Central City Opera  
Centura Health Integrative  
Medicine  
Bob and Judy Charles  
Children's Museum of Denver  
Chipper's Lanes  
Andrea Cipoletti  
City of Louisville  
Tara Cluck  
Clutter  
Color Me Mine  
Colorado Ballet



Almost 100 Imagine! employees made a donation back to Imagine! through payroll deduction, raising more than \$8,000. Employees voted to direct those funds to support accessible technologies at Imagine!'s adult day program sites.

Colorado Chautauqua Association  
Colorado Music Festival & Center  
for Musical Arts  
Colorado Symphony  
Cris Conklin  
Crackpots  
Christina Craig and Charlie Swarts  
CyclHOPS Mexican Bike CANTina  
Dairy Arts Center  
Janell and Pat Daly  
Allix Damalas  
Dazzle Jazz  
Jennifer Dennis  
Denver Art Museum  
Denver Boulder Couriers  
Denver Broncos Football Club  
Denver Museum of Nature &  
Science  
Denver Zoological Foundation  
Jane Dinsmore  
Dizzy Family Fun Center  
Eats & Sweets  
Eldorado Artesian Spring  
Electra  
Enhanced Movements Chiropractic  
and Wellness Center  
Eric Olson, Master Jeweler  
ETown  
Fairways at the Stable  
Fior Di Latte  
City of Boulder Flatirons  
Golf Course  
Foolish Craig's Cafe  
Frasca Food & Wine  
Freewave Technologies  
Front Range Anglers  
Gateway Park Fun Center  
Georgia Boys BBQ  
Glenwood Caverns Adventure Park  
Gold Key Travel  
GolfTEC  
Grandrabbits Toy Shoppe  
Mr. and Mrs. Cary Grous  
Heifer and the Hen Organic  
Creamery  
Debbe Henn  
High Country Motorcycle Rentals  
I and love and you  
Ice Centre At the Promenade  
Illegal Pete's  
ImageSeller  
Indian Peaks Golf Course  
Iron Mountain Hot Springs  
J&L Distilling Company  
Jax Outdoor Gear Lafayette  
Kevin Taylor Restaurant Group  
Kroenke Sports Enterprises  
Priscilla and John Lacy  
Larkburger  
Jennifer and Eric Layton  
Lazy Dog Restaurant & Bar  
Leah Nickie Advanced Aesthetics  
Lems Shoes  
Lindsay's Boulder Deli  
at Haagen-Daz  
Ms. Debbie Lipski  
Liquid Mechanics Brewing  
Lodge Casino - Black Hawk  
Longmont Dairy Farm  
Longmont Kiwanis Club  
Lucky's Market  
Macerich/Flatiron Crossing  
Marriott Westminster  
Mile High DJ Supply  
Millennium Harvest House Boulder  
Modern Market

Ellen Monroe  
Morning Glory Cafe  
Mountain Sun Pub & Brewery  
Moxie Bread Company  
Mudrocks Tap & Tavern  
Mudslingers Pottery  
Murphy's North  
MyChelle Dermaceuticals  
Karen and John Nevins  
Newton Running  
Nicolò's Pizza  
North End Salon & Spa  
Old Chicago  
Old Friends  
Organic Sandwich Company



**High Plains Bank** in Longmont sponsored two tables at the Imagine! Celebration. Bank President John Creighton says he appreciates the opportunity to bring more guests to experience Imagine!'s mission and get involved.

Origins  
Oskar Blues  
Page Two Cafe  
Pasta Jay's  
Peak Entertainment at  
1STBANK Center  
Phamaly Theatre Company  
Pirates Cove Family Aquatic Center  
Jake Plummer  
PMG Wine Bar  
Polar Bottle  
Por Wine House  
Ramble on Pearl  
Rayback Collective  
Robin Chocolates  
Danielle Romero  
Rosalee's Pizzaria  
Salvaggio's Deli  
Sample Supports  
Samples World Bistro  
Savory Spice Shop  
Virginia Schenk  
Peg and Bill Sharp  
Beverly and Gene Shaw  
Sandi and Steve Shaw  
Shuttles, Spindles & Skeins  
Dennis W. Smith  
Snow Apparel  
Spruce Confections  
Katarina Stah  
Starfish Jewelry  
Leona and Bernie Stoecker  
Suerte Tequila  
Sugarbeet  
Super Mini Walnut Cafe  
Swoon Jewelry Studios  
T/aco

Tahona Tequila Bistro  
Ted's Montana Grill  
The Art of Cheese  
The Dragontree Spa  
The Greenbriar Inn  
The Groom Closet  
The Happy Beast  
The Melting Pot  
The Old Mine Cidery & Brewpub  
The Puddle Car Wash  
The Regiment Shops  
The SideDoor Salon  
The Sink  
Tinker Art Studio  
Tokyo Joe's  
Trader Joe's  
Ute Creek Golf Course  
Vapor Distillery  
Via Toscana  
VSP Vision Care  
Wallaroo Hat Company  
Christian Walter  
Water World  
Well Spine Family Chiropractic  
Scott Wendelberger  
Ms. Athena West  
West Flanders Brewing Co.  
Western Disposal Services  
Wonderbound  
WOW! Children's Museum  
Z2 Entertainment

**THE IMAGINE! PROMISE**  
The Imagine! Promise represents individuals who have let us know that they have included the Imagine! Foundation in their estate plan. They've made a promise to keep Imagine! strong for the future.

Anonymous (1)  
Whitney Blair  
Kathy Coyne  
Lisa Fiero & Joey Crompton  
Annette Higgins  
Mike Hoover Trust  
Kristin & George Karakehian  
K.M. Kleinke  
Eva Klemens & Caroline Siegfried  
Linda & Richard Livingston  
Jennifer & Eric Love  
Carol & John Mehaffy  
Marianne Nick  
Susan LaHoda  
Vickye & Ron Secrist  
Sharon Svendsen  
Elizabeth G. Tarvin Trust

*The Imagine! Foundation is grateful for the compassionate individuals, businesses and foundations listed here who gave generously from July 1, 2017 to June 30, 2018. We have made every effort to ensure the accuracy of our lists. If we have misspelled or inadvertently omitted a name, please accept our apologies. Call the Imagine! Foundation at 303-926-6443 with corrections.*





1400 Dixon Avenue  
Lafayette, CO 80026-2790  
303-665-7789  
[www.imaginecolorado.org](http://www.imaginecolorado.org)

## WAYS TO GET INVOLVED

### GIVE

Your philanthropic gifts (cash, stock, even vehicles) enable Imagine! to support people with intellectual disabilities so they may live fully and participate in the community. Give today at [imaginecolorado.org/donate](http://imaginecolorado.org/donate), or call the Imagine! Foundation at 303-926-6443.

### PARTNER

Join 40+ other local businesses that employ people served by Imagine!.. Explore the possibilities by calling 303-665-7789.

### VOLUNTEER

Give the gift of your time and talents, and everyone will benefit! Call 303-665-7789, and ask to speak to the Volunteer Coordinator to learn about the myriad volunteer opportunities and find a fit that is right for you.

### WORK

Join Imagine!'s team of incredible employees and experience a rewarding career. View current openings at [imaginecolorado.org/jobs](http://imaginecolorado.org/jobs).

