



Imagine!

2020 ANNUAL REPORT

**Creating a world of opportunity
for all abilities**





Our History

Imagine! was established in 1963 by a group of parents determined to see that their children with developmental disabilities had the opportunity to participate in their community.

We continue to use that original goal as the basis for our mission. We believe that people with intellectual or developmental disabilities have much to offer, and providing the tools and supports that allow them to show what they have to offer benefits us all.

Imagine! offers a continuum of services to provide supports for people through their lifetime. In 2019-2020, Imagine! served 4,317 individuals and their families.

Our Mission

The mission of Imagine! is to create a world of opportunity for all abilities.

Values and Principles

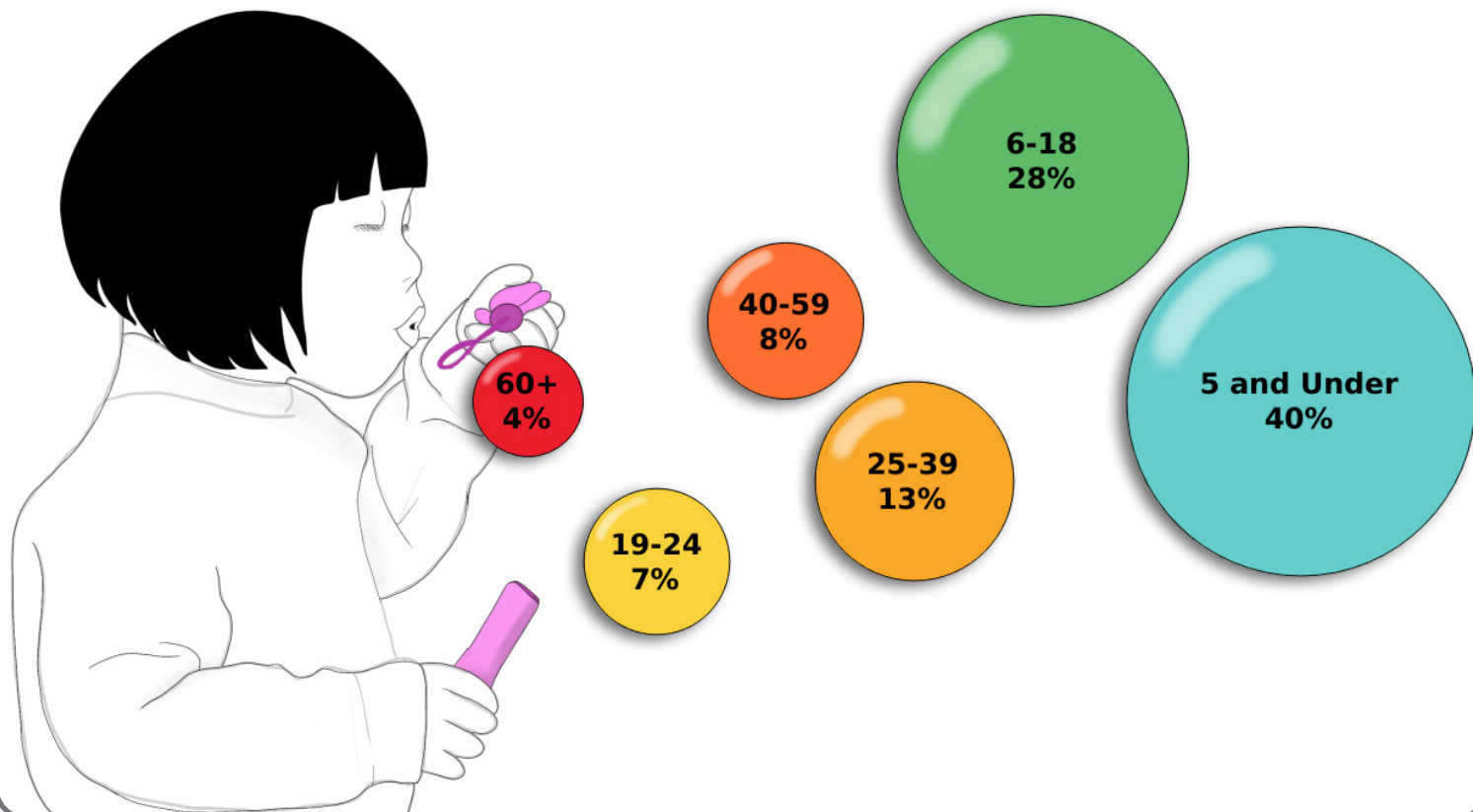
- Our workforce is our number one asset.
- Families are essential to our success.
- We embrace a culture of support and creativity.
- We inspire a positive and inclusive community.
- We honor our tradition of integrity and leadership.
- We believe in the potential of all.

Throughout this report you will see images of original art created by members of the Imagine! community. Check out the back page to discover where you can see, and purchase, even more amazing works of art.



This year, you have helped us serve...

People of all ages



2019 - 2020 Imagine! Executive Team

Rebecca Novinger

Chief Executive Officer

Laura Ball

Director of Human Resources

Jenna Corder

Director of Client Relations

Robin Grey

Chief Financial Officer *(February to Present)*

Kevin Harding

Director of Information Technology

Fred Hobbs

Director of Public Relations

Shannon Kluth

Director of Service Operations

Patti Micklin

Imagine! Foundation Executive Director

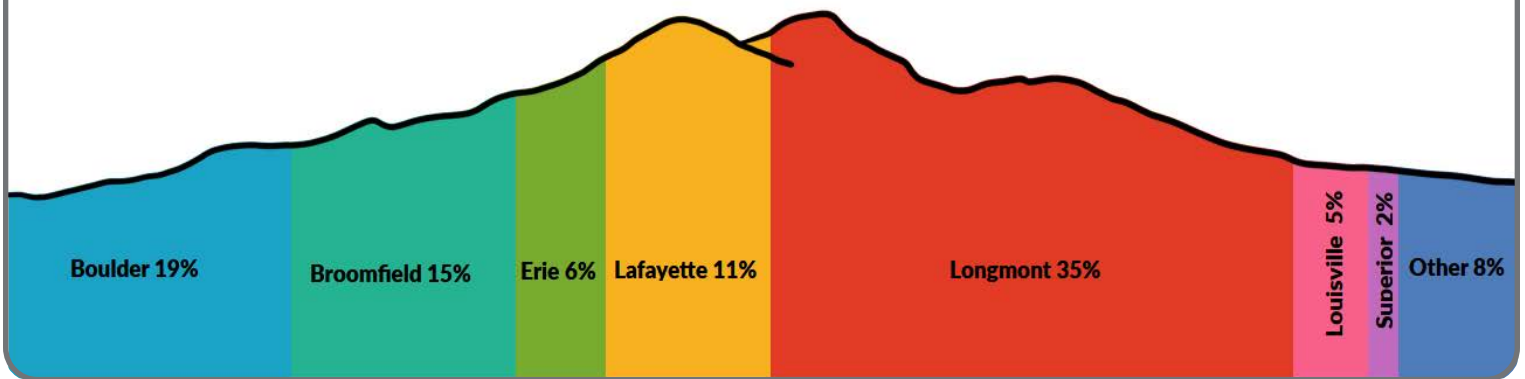
John Nevins

Chief Financial Officer *(July to February)*

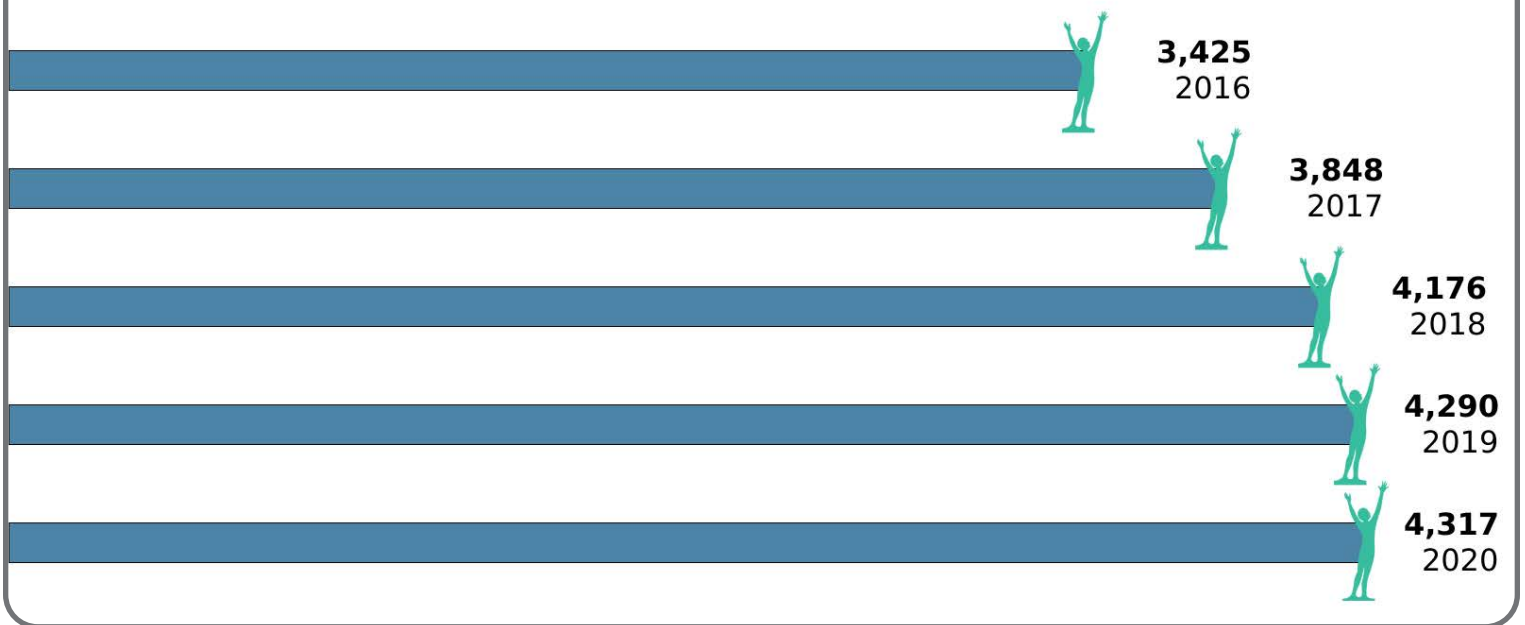
Caroline Siegfried

Executive Assistant

People from across Boulder and Broomfield Counties



And more people each year!



2019 - 2020 Imagine! Board of Directors

- Ronald Alford**
President
- Walt Pounds**
President Elect
- Ken Curtis**
Past President
- Cathy Bodine**
Treasurer

- Tim Haverstick**
Secretary
- Sara Boylan**
- Jodie Gilbert**
- Laura Koch**
- Bella Larsen**
- Kevin Nelson**

- German Nunez**
- Heidi Storz**
- Charles Wellman**
- Mark Zentner**
- Rebecca Novinger**
CEO

From the CEO & Board President



Rebecca Novinger

Chief Executive Officer, Imagine!



Ron Alford

President, Imagine! Board of Directors

Dear Friend of Imagine!:

This has been a year like no other.

We began the month of July 2019 filled with optimism and a fresh outlook for the future. New leadership was in place and we were looking forward to building on Imagine!'s almost 60-year legacy of leadership in the field of serving individuals with intellectual and developmental disabilities (I/DD).

And for the first few months of the year, that's exactly what was happening. Boulder and Broomfield County residents supported by Imagine! were living fulfilling and active lives. Our services were moving forward as usual, and Imagine! was front and center in ensuring our fellow citizens with an intellectual disability were contributing members of a healthy and diverse community.

Then, a global pandemic changed everything. Almost overnight, Imagine! was forced to substantially rethink its approach to service delivery and reimagine what it meant to create a world of opportunity for all abilities, when so much of the world was shut down.

The remarkable thing about Imagine! during the pandemic is that the optimism and fresh outlook that marked the beginning of the year never went away. Team members at every level of Imagine! adapted, adjusted, and explored creative solutions to ensure that those in our services continued to have opportunities to engage in the world just like everyone else. The tools and techniques may have changed, but the focus on our mission never wavered. This Annual Report features facts, figures, and stories from before and during the pandemic, and that continuity of purpose envelops both periods.

As of the publishing of this Annual Report, uncertainty remains as to when this pandemic will end, and exactly what services will look like in the future is unclear. What is clear, however, is that Imagine! will take the lead in exploring this new frontier, as we have done since this organization was founded back in 1963. It's going to be an amazing journey, and we hope you will join us as we move forward.

Sincerely,

A handwritten signature in black ink that reads "Rebecca Novinger".

Rebecca Novinger

Chief Executive Officer, Imagine!

A handwritten signature in black ink that reads "Ron Alford".

Ron Alford

President, Imagine! Board of Directors



Imagine! Care Coordination

Imagine!'s Care Coordination department acts as the gateway to services for individuals with intellectual disabilities living in our community. Through information and referral, as well as financial assistance, Imagine!'s Care Coordination team helps people navigate the complex system of services and ease their emotional and financial burdens.



Provided information and referrals to
2,672 families
providing at-home care for an individual
with intellectual disabilities.

Distributed **\$1,176,069**

to help 520 families with the
extraordinary costs of raising a child
with autism or other special needs.



Coordinated services for
1,172 babies and toddlers
with developmental delays or disabilities.

Distributed **\$200,884**
in emergency funds to 125 individuals
and families facing crisis situations
requiring immediate financial
intervention.



Imagine! Direct Services

Imagine!'s Direct Services are designed to incorporate people of all ages who have developmental, cognitive, and physical challenges into the fabric of their communities. Services include educational and therapeutic services, job training and placement, recreation and leisure activities, opportunities for community living, behavioral health services, technology solutions, and support for families.



Imagine!'s School Age Services assisted

85 children
with developmental disabilities in developing life-long skills through summer camp, after school, and community activities.

Imagine!'s Adult Day Services supported

509 adults
with disabilities through enriching and therapeutic day programs and classes, as well as night and weekend events.



Imagine!'s Employment Services provided job training and placement

for **127 adults**
with intellectual disabilities.

Imagine!'s Residential Services provided a variety of residential options for

160 adults
with intellectual disabilities.



Imagine! Direct Services

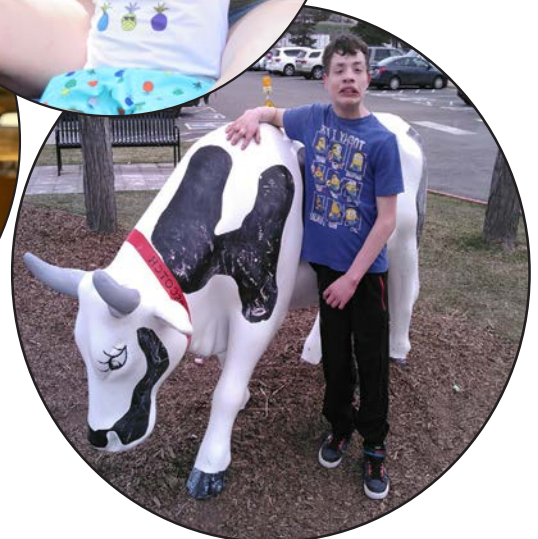
Imagine! provided mental health and behavioral services to

334 individuals

with intellectual disabilities diagnoses.



Imagine! had **211 Family Recruited Employees** supporting
189 people receiving services.





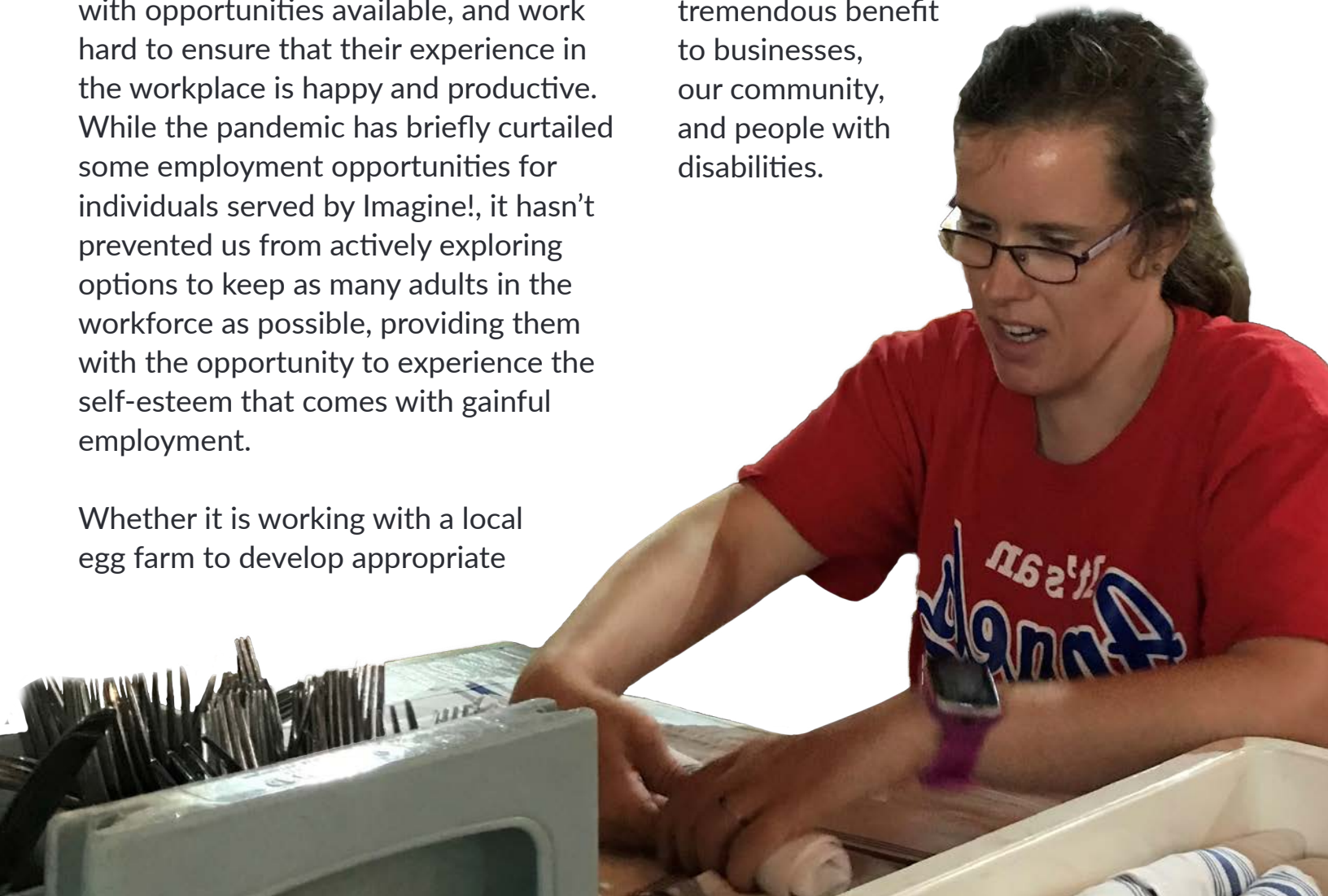
Creating An Inclusive Workforce

Since 1984, Imagine! has assisted individuals with developmental disabilities across Boulder and Broomfield counties in finding meaningful employment.

This starts with job coaching and skill development, working toward employment goals. Imagine! partners with over 40 local businesses to provide job opportunities to individuals we serve. We match interests and skillsets with opportunities available, and work hard to ensure that their experience in the workplace is happy and productive. While the pandemic has briefly curtailed some employment opportunities for individuals served by Imagine!, it hasn't prevented us from actively exploring options to keep as many adults in the workforce as possible, providing them with the opportunity to experience the self-esteem that comes with gainful employment.

Whether it is working with a local egg farm to develop appropriate

safety protocols for continuing work during a pandemic, or sharing with the world how we use Virtual Reality to provide realistic job training in a safe and effective manner, Imagine!'s employment services provide tremendous benefit to businesses, our community, and people with disabilities.



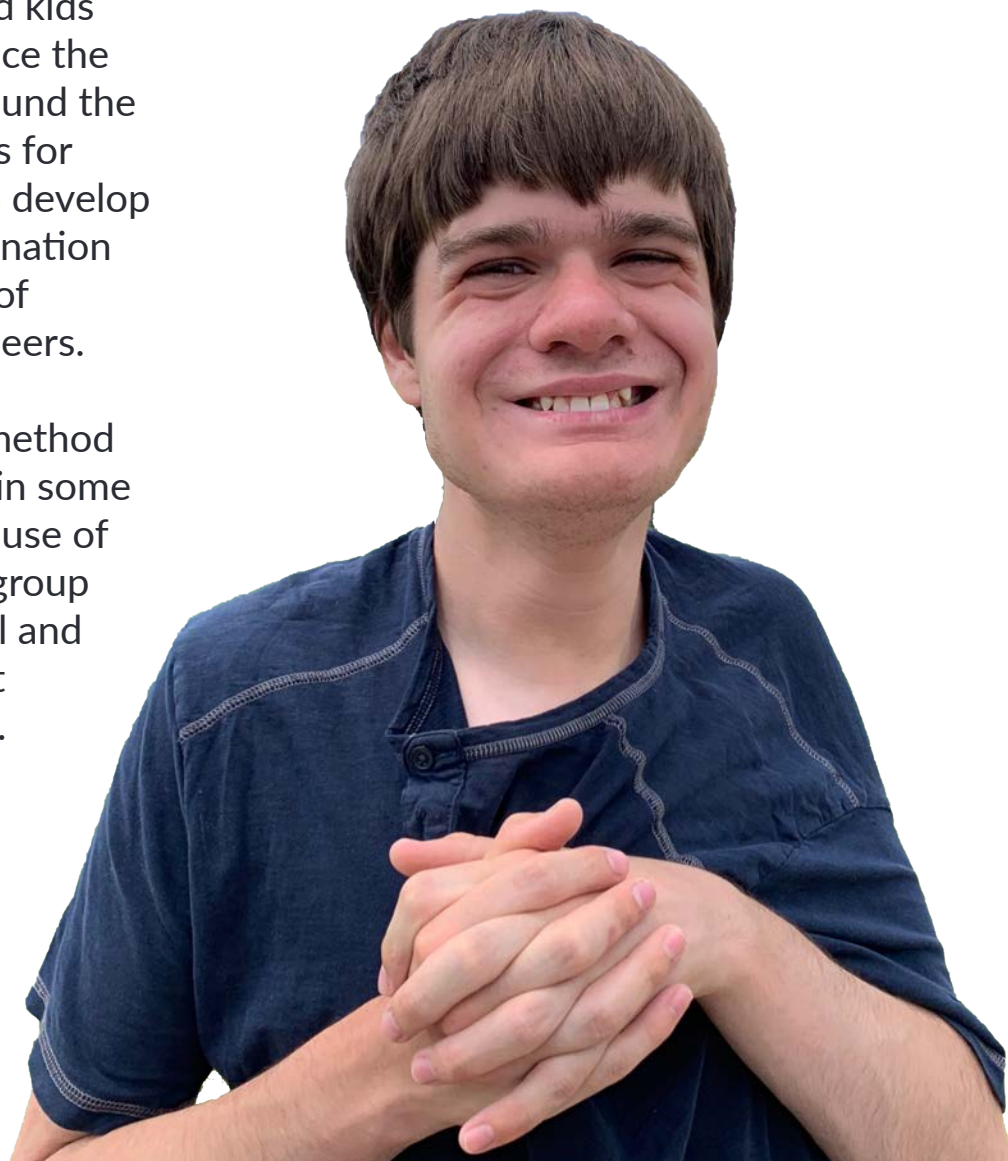
Making The World Accessible For All Children

Imagine! provides services to babies, toddlers, and school aged children so they can learn new skills and be part of their communities regardless of ability or disability.

Whether we are taking field trips to a community garden to introduce toddlers to the natural world or hosting a “Bike Block Party” using adaptive bikes so school aged kids with disabilities can experience the joy and freedom of a ride around the park, all of Imagine!’s services for children are designed to help develop socialization skills and coordination skills, and especially a sense of acceptance and self among peers.

The pandemic changed the method of delivery of those services in some ways, including an increased use of telehealth tools and smaller group activities for our After School and Summer Camp programs, but the goals remained the same. As one parent told us: “My daughter’s autism tends to make her shy away from others and unfamiliar activities ... Imagine! exposes her to different activities

and encourages peer interactions, and I see her skills improve on a daily basis.”



Discovering the Inner Artist

A common thread runs through Imagine!'s services for all ages – art.

And why not? Art offers so many benefits. It opens the door to creative expression and self-esteem. Art also creates opportunities to focus on skill development as varied as fine motor skill improvement to becoming comfortable with performing in public. In the pre-pandemic world, it was common to see individuals served by Imagine! displaying their art in local galleries, performing live music at local venues, or even “Dancing With the Broomfield Stars.”

The pandemic caused Imagine! to quickly pivot toward providing many of our performance and art classes online, and fortunately they translated well to that new medium and have proven to be among the most popular of our virtual offerings. On any given

day Imagine! instructors can be found across the web hosting numerous music, dance, movement, drawing, and painting classes filled with students eager to demonstrate that a disability is not a barrier to bringing beauty to the world through artistic expression.



Coming Together As A Community

Imagine! is a community-based organization, and we can't be successful in our work without the support of our community.

Fortunately, we provide services in a community that has made it abundantly clear that our efforts matter and that our friends and neighbors are here to lend a helping hand. Here's one fun example from last fall: TeamBonding, a corporate team building company, and employees of Intercept Pharmaceuticals participated in a team building exercise where they had to build, and then race, a bunch of children's bicycles. After the event was over, they donated the bikes to Imagine!. We used the bikes in our children's programs as well as for our Holiday Gift Drive, bringing smiles to many faces of the youngsters we serve.

When COVID cast a pall over our work, we wondered if we would lose some of

that community support and connection, which is so vital to our efforts. We needn't have worried. The support continued, and perhaps even increased, if only expressed in different ways.

For example, many organizations, civic groups, and individuals provided us with cloth masks. We received so many that several Imagine! offices were filled with boxes of masks! The masks didn't stay in the offices for long, however. We shared masks with employees, families, and people in services to ensure that they had the proper equipment to stay safe and healthy in our new

pandemic world. We are so grateful for our community, and know that we can't create a world of opportunity for all abilities without them.



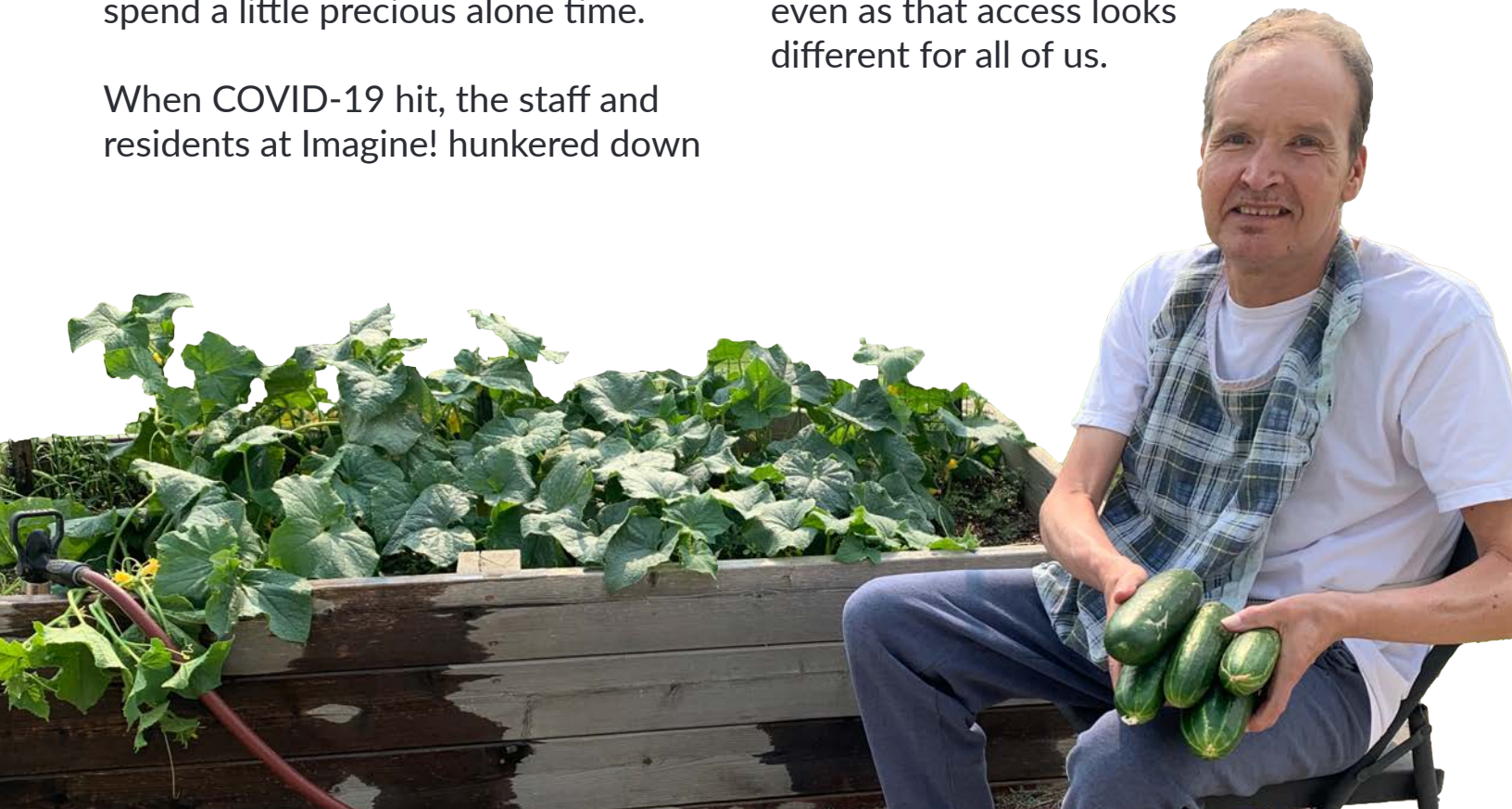
Home Safe Home

Imagine! offers customized residential options for adults to increase independence, individual dignity, and community involvement.

Imagine!'s residences are much more than places where the people we serve eat and sleep. Instead, they are hubs of learning and activity, and act as the launching point for a huge variety of services that open doors to real and meaningful community engagement. Imagine! homes also offer the more traditional aspects of home we all appreciate, like spaces to read or write, to socialize and play games, or just to spend a little precious alone time.

When COVID-19 hit, the staff and residents at Imagine! hunkered down

for a while, taking extra, even heroic, steps to ensure that nobody living in our residences contacted the virus. After a couple of months, protocols were put in place for occasional visits outside, using all necessary social distancing and mask wearing precautions. We continue to work to ensure that individuals living in our residences can access the community the same as anyone else, even as that access looks different for all of us.



Pivoting During the Pandemic

Imagine!'s services have always had a primary goal of ensuring that people with intellectual disabilities have full access to their communities, just like any one of us wants, expects, and deserves.

That means that so much of what we do is out in the community. In past years you'd likely see us at the stadium supporting our local sports teams, hiking on trails enjoying the beauty Colorado has to offer, or working at local businesses. Needless to say,

families and clients, to exponentially increasing our online service offerings, Imagine! transformed almost overnight in order to ensure that the people we served remained active members of their communities, even within the limited social opportunities affecting

all of us. We also did everything we could to protect both our employees and the people who accept services from us.



Every single Imagine! employee received a kit containing Personal Protection Equipment (PPE) including masks, hand sanitizer, and disinfectant. For

the COVID pandemic made that approach to services far more difficult. Fortunately, Imagine! leadership and employees barely took a moment to breathe before completely overhauling and reimagining how our services could be delivered. From smaller class sizes, to using telehealth to meet with

employees in our group homes, who were required to be even more diligent about safety protocols, full sets of PPE were provided, and stringent protocols were put in place to ensure maximum safety while still supporting our residents not only in being safe, but also in remaining active and engaged.



High Tech Possibilities

Emerging technologies provide opportunities for people with intellectual disabilities to increase their independence and lead fulfilling, healthy lives. Imagine! has been at the forefront of testing and integrating technology into services for more than two decades.

SCRATCH

Last year, participants in Imagine!'s Community and Employment Services program were introduced to a coding program called Scratch. Scratch is a free program that allows users to program their own interactive stories, games, and animations – and share their creations with others in the online community. Scratch helps people learn to think creatively, reason systematically, and work collaboratively – essential skills for life in the 21st century for people of all abilities.

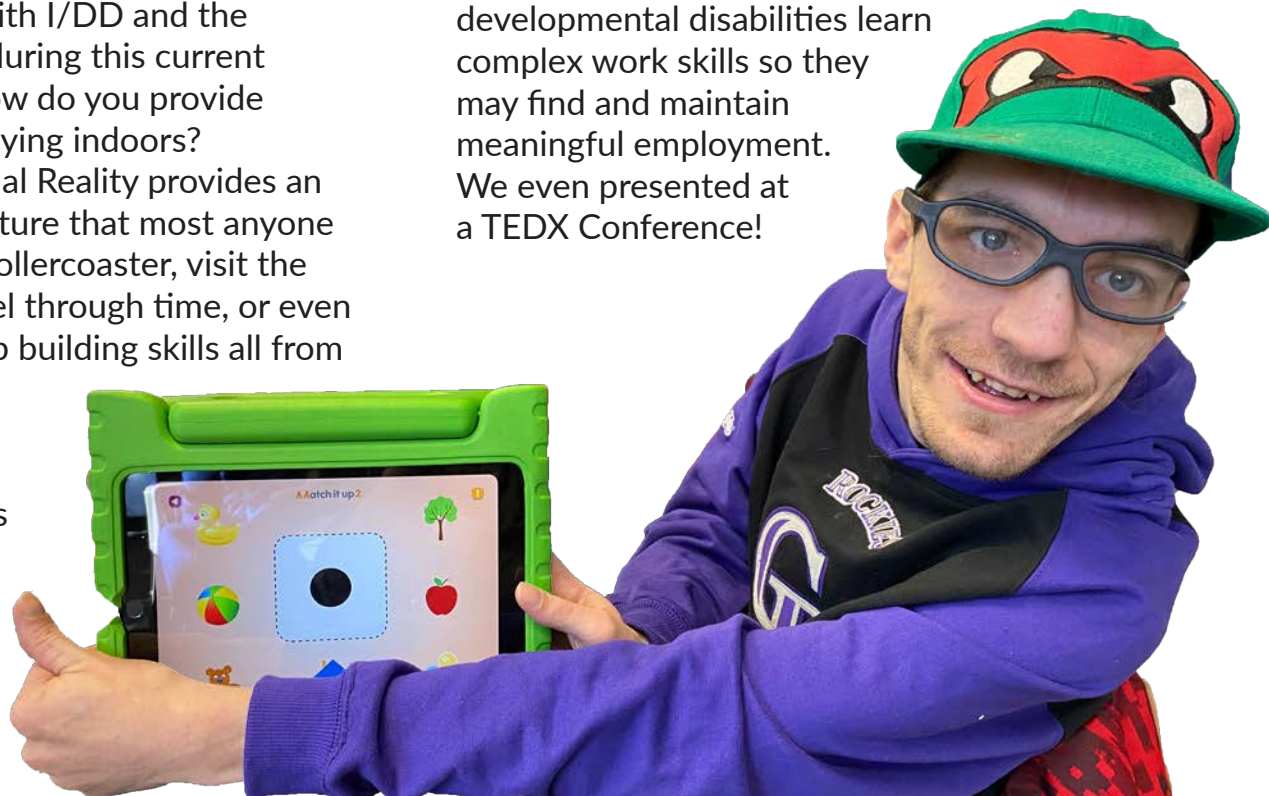
VIRTUAL REALITY

Services have had to change drastically to keep people with I/DD and the community safe during this current pandemic. But how do you provide services while staying indoors? Technology! Virtual Reality provides an avenue for adventure that most anyone can take. Ride a rollercoaster, visit the Eiffel Tower, travel through time, or even learn essential job building skills all from the comfort of your own home. Modern technology allows providers to continue services in times of uncertainty, and

virtual reality opens up endless possibilities for people with I/DD. Imagine! has embraced Virtual Reality and is actively incorporating it into our services, now and into the future.

TECHNOLOGY EVANGELISTS

Imagine! has always believed that there is an educational aspect to our work. When it comes to best practices, we want to learn from others, as well as to share what we know with the entire I/DD community. For example, last year Imagine! employees presented at several conferences, both locally and nationally, about how we are using Virtual Reality to help individuals with intellectual and developmental disabilities learn complex work skills so they may find and maintain meaningful employment. We even presented at a TEDX Conference!



Imagine! Employees Embrace The Challenge

We've always known that Imagine! employees are the best people!

For instance, in November, Colorado was hit by a massive snow storm. This forced us to cancel many of our services.

But no matter what, we can't cancel our residential services – individuals living in Imagine! homes need support irrespective of the weather. Imagine! residential employees saw what was needed and braved the storm to get to work, tackling treacherous roads and finding unique ways to navigate the weather to ensure the health and safety of the folks we serve in our homes.

So we already knew that Imagine! employees were ready, willing, and able to step up when most needed. That call to step up was never more necessary than when the pandemic first hit. Recognizing that some individuals were at a much higher risk of serious consequences if they contracted COVID-19, Imagine! staff members readily embraced new, stringent policies for wearing Personal Protective Equipment (PPE) while on shift, and avoided public places and large crowds even in their time off.





This strict compliance with rules, even those that came with some personal costs, paid off for Imagine!, and the people we serve have remained safe and well.

That's not the only adjustment Imagine! employees embraced. Before the pandemic, Imagine!'s services were primarily delivered in person. Our employees loved that aspect of the work and the close, personal relationships engendered by that approach. The pandemic forced many of those services to go online.

Rather than bemoan the lack of one-on-one interaction, Imagine! employees stepped up to develop creative and unique ways to keep that personal touch even while using tools not

normally known for their ability to create real human connections.

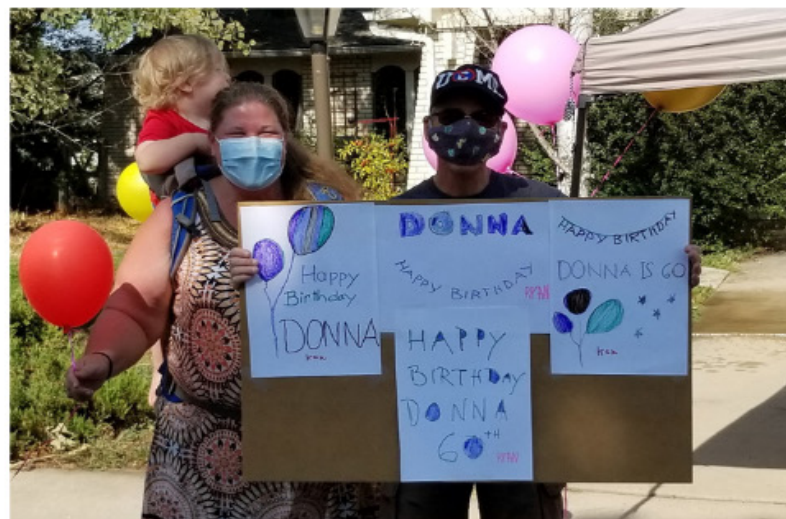
The future of service delivery is uncertain right now. We may never go all the way back to the way it was before. No matter what they look like, however, we know Imagine! employees will adapt, adjust, and find new ways to create a world of opportunity for all abilities, no matter how the rest of the world changes.



A Tale of Two Imagine!s



When the last fiscal year dawned, it was business as usual for Imagine! – delivering services designed to incorporate our fellow citizens with intellectual disabilities into the fabric of our communities. The pandemic changed some of our service delivery methods, but it didn't change our goal! The pictures on the left show the “before” and the pictures on the right show the “after” of our mission in action.



Volunteers Help Imagine! Thrive



282 volunteers served



8,110 hours of their time last year

Each year, Imagine! hosts volunteer groups to help with large projects, and individual volunteers to help with a variety of needs. Imagine!'s volunteer program was briefly paused in March to ensure that the people Imagine! serves remain safe and healthy, but has resumed on a limited basis.

FALL FORMAL

A sorority group from University of Colorado created a night to remember for clients in Imagine!'s Residential Services at the Fall Formal dance! Volunteers handled event set up, decorations, and food service.

RESIDENTIAL SUPPORTS

A local church youth group helped restore one of the decks at an Imagine! residential site. Thanks to their efforts, the space became more useable and enjoyable for the people living there.

FUN AND FITNESS

Imagine!'s Community Based services regularly benefitted from groups of volunteers supporting our Fun and Fitness group on Tuesday mornings. Volunteers helped with soccer skills, geocaching, hiking, and other recreational activities.



CAR WASHES

Volunteers of all ages showed up throughout the year to wash Imagine! passenger vans and cars. These car washes helped to keep our fleet of 80+ vehicles in tip top shape. Transportation is a key ingredient in providing services in the community.





Financial Highlights

Consolidated Financials

The Developmental Disabilities Center doing business as Imagine! and Affiliates Financial Statements is comprised of Imagine!, the Imagine! Foundation, three Imagine! Housing Corporations (group homes), and the Imagine! Development Company. Imagine!'s audit and IRS 990 can be viewed online at www.imaginecolorado.org/financial-information.

Net Income

Imagine! budgets for a positive margin or "Net Income" where revenue exceeds expenses. Imagine! generated a positive Net Income in FY20 due to additional grants and increased fundraising, targeted rate increases from the State, and earnings on investments. Net Income is used to invest in the organization, funding current or future capital needs such as facilities improvements or vehicles, and principal and interest for debt service.

Expenses

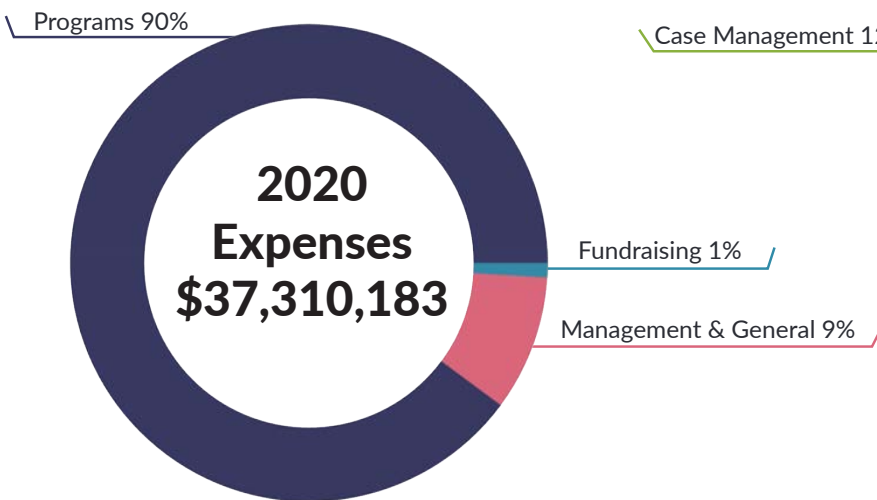
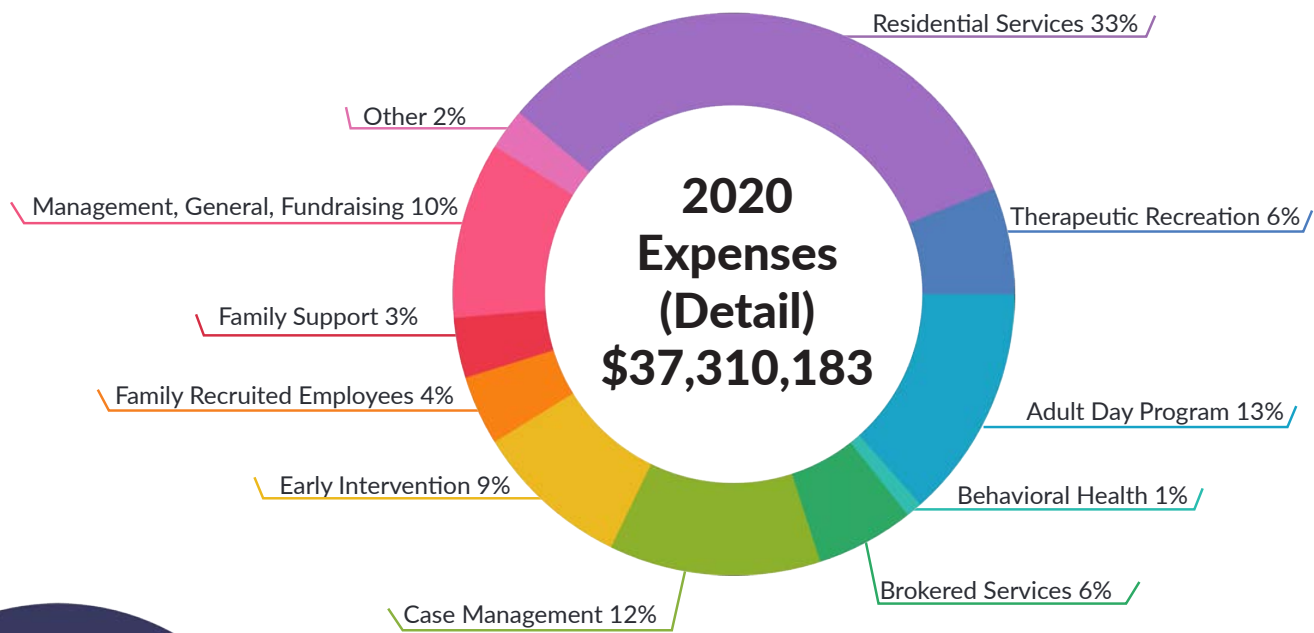
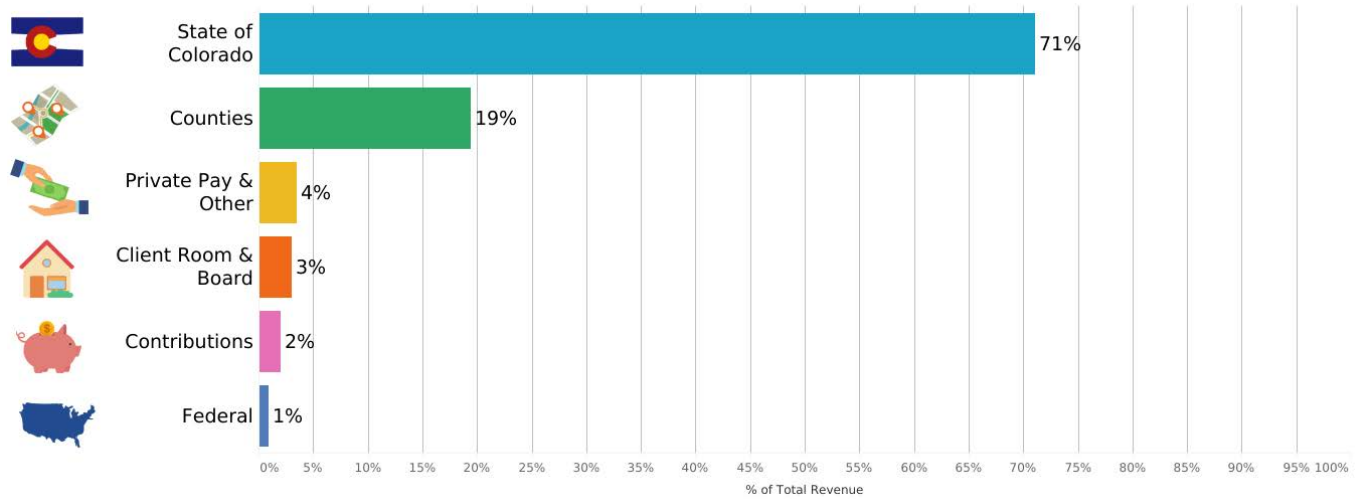
The Imagine! Foundation handles private fundraising for Imagine! and transfers the revenue to Imagine! on a quarterly basis. Foundation revenue and expenses are included in the consolidated financials and are one percent of Imagine!'s expenses. Management & General expenses account for nine percent. Ninety percent of expenses go to programs.

Developmental Disabilities Center doing business as Imagine! and Affiliates CONSOLIDATED STATEMENT OF FINANCIAL POSITION June 30, 2020 and 2019

ASSETS	2020	2019	LIABILITIES & NET ASSETS	2020	2019
Current assets:			Current liabilities:		
- Cash and cash equivalents	\$8,579,365	\$10,253,804	- Accounts payable and accrued expenses	\$2,336,479	\$2,303,532
- Certificates of deposit	2,021,691	1,001,316	- Deferred revenue	-	2,848,337
- Investments	1,182,465	1,651,958	- Current portion of long-term debt	186,768	173,384
- Accounts receivable	6,301,303	5,263,951	TOTAL CURRENT LIABILITIES	\$2,523,247	\$5,325,253
- Prepaid expenses & other	662,955	507,195			
TOTAL CURRENT ASSETS	\$18,747,779	\$18,678,224	Liability for pension benefits	1,414,748	1,256,138
Certificates of Deposit	-	1,504,666	Long-term debt, net of current portion	988,644	1,166,544
Prepaid benefit cost	1,086,605	973,754	TOTAL LIABILITIES	\$4,926,639	\$7,747,935
Beneficial interest in assets held by others	456,851	439,558	NET ASSETS:		
Land, building and equipment, net	8,532,222	8,893,827	Unrestricted		
TOTAL ASSETS	\$28,823,457	\$30,490,029	- Net investment in land, building and equipment	7,474,799	7,681,888
			- Undesignated	16,422,019	15,070,206
			TOTAL NET ASSETS	\$23,896,818	\$22,742,094
			TOTAL LIABILITIES AND NET ASSETS	\$28,823,457	\$30,490,029

Financial Highlights

2020 REVENUE \$38,510,666



Imagine!

FOUNDATION

Creating a world of opportunity for all abilities

The Imagine! Foundation raises funds to support Imagine!'s innovative projects and to help fill current and anticipated gaps in government funding for its vital services. Since the Foundation's inception in 2000, thousands of compassionate individuals, businesses, and foundations have contributed over \$10.5 million to partner with Imagine! to serve people in our community who need supports.

You are the key ingredient that makes this work, and makes these services possible. Thank you for stepping forward generously. Your gifts tell us that our community believes in the potential of all.



Photo by Jeremy Papasso, Broomfield Enterprise

2019 – 2020 Imagine! Foundation Board of Directors

Jana Petersen
President

Alexander "Sandy" Brown
Vice President

Pete Madden
Secretary

Patrick Daly
Treasurer

Robert F. Charles, Jr.
Founder

Don Brown

Steve Bryant

John Creighton

Courtney Gimeno

Katie Hawkins

George M. Karakehian
Emeritus

Meg McClellan

John R. Mehaffy
Emeritus

Zoe Polk

Leona Stoecker
Emeritus

Jessica Tyler

Patti Micklin
Executive Director

From the Imagine! Foundation Executive Director & Board President



Patti Micklin
Imagine! Foundation
Executive Director



Jana Peterson
President, Imagine! Foundation
Board of Directors

Dear Friend of Imagine!:

This year started like many have before. Then, in a flash, the pandemic changed almost everything.

For the Imagine! Foundation, one constant proved true from the “before” and the “now,” and that constant is you.

Throughout the year, you have showed up to support people with intellectual disabilities in so many ways – by volunteering your time, donating generously, raising awareness in your own circles, and employing people served by Imagine!. And when the pandemic created hardships for Imagine! employees and people we serve, you showed up again with generous support, matching funds put forth by the Imagine! Foundation for the COVID-19 Rapid Response Fund.

Our community is unified around the core belief that everyone has something to contribute, and our lives are richer through that inclusivity.

Thanks to you, the Imagine! Foundation had an extraordinarily successful year, resulting in significant support for all of Imagine!’s services. Our Board Members asked for your support, and you responded generously! In FY2020, 1,011 donors contributed \$881,739.

The 19th Annual Imagine! Celebration provided an in-person mission connection for 465 guests. Volunteers ensured an inspiring evening, raising \$360,000.

Your generosity helped to increase the use of emerging technologies, provide substantial funding for Imagine!’s programs and services, and ensure emergency resources like appropriate Personal Protective Equipment for Imagine! employees and people we serve from the onset of the pandemic.

As we continue to navigate the challenges of COVID-19 while providing vital services to people with intellectual disabilities, we know we can count on you, our generous community, to support these efforts. During trying times, we take comfort in knowing that while this pandemic affects all of us in our own lives and in our own ways, we share the commitment to ensure that Imagine! continues to create a world of opportunity for all abilities.

Sincerely,

A handwritten signature in blue ink that reads "Patti Micklin".

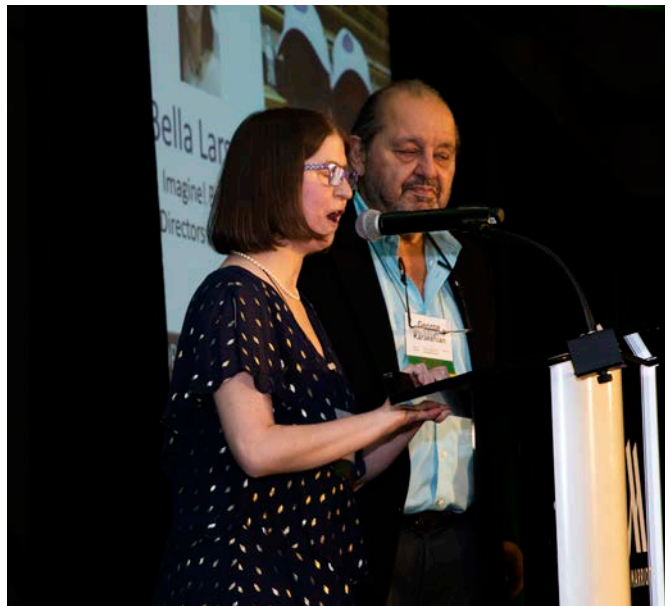
Patti Micklin

Imagine! Foundation
Executive Director

A handwritten signature in blue ink that reads "Jana Peterson".

Jana Peterson

President, Imagine! Foundation
Board of Directors





The Imagine! Celebration

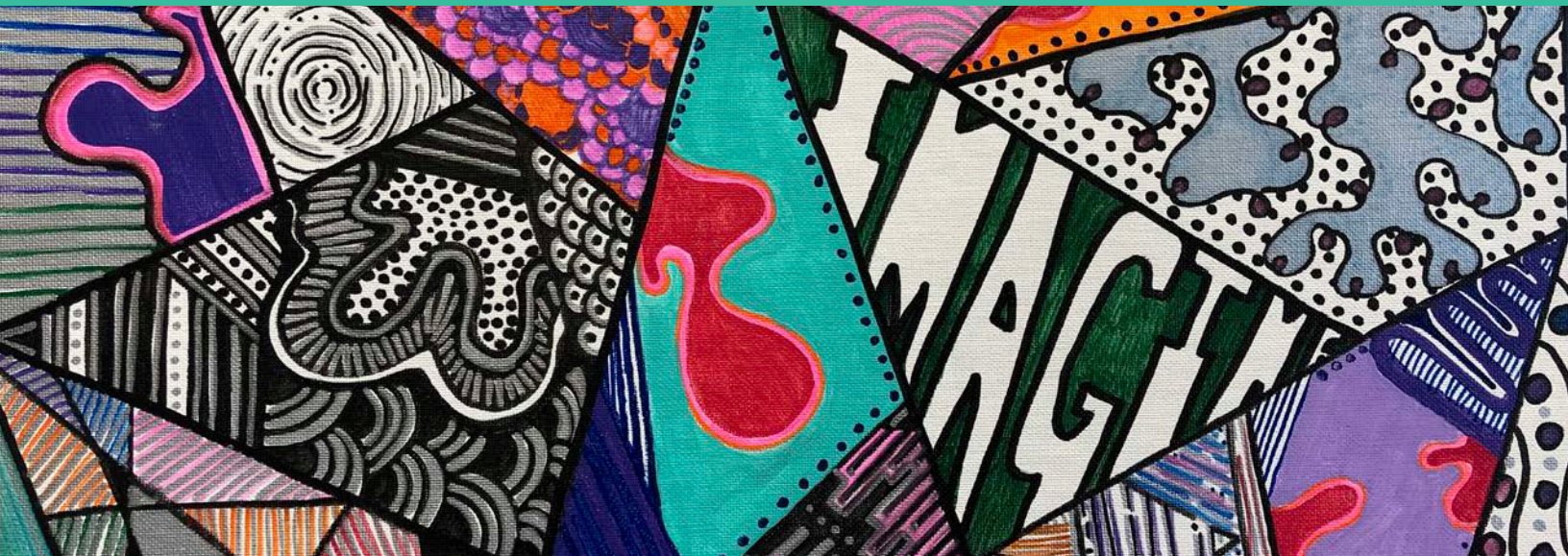
The 19th Annual Imagine! Celebration connected 465 generous guests to Imagine!'s mission of creating a world of opportunity for all abilities. Katie Hawkins and Zoe Polk, Imagine! Celebration Committee Co-Chairs, led the effort to ensure that guests experienced a memorable evening and left believing in the potential of all.

In a special video, the Tyler family shared their personal journey helping their newborn son, Ben, navigate a brain injury. Imagine!'s Early Intervention services were a vital component of his recovery, and all of the guests celebrated becoming part of Team Ben, cheering him on all the way. View the video at imaginecolorado.org/get-involved/imagine-celebration.

Thanks to the generosity of sponsors and guests, we raised more than \$360,000! Funds supported all of Imagine!'s programs, benefiting people with intellectual disabilities at every age and stage of their lives. The special appeal provided specific support for Imagine!'s Summer Camp and After School activities.

465 GUESTS \$360,000 RAISED





Painting credit to Imagine! Employee Ally Joel

We Love Imagine! Donors!

PLATINUM \$10,000 +

AEC Trust
 Leslie & Sandy Brown
 Colorado COVID Relief Fund
 Community Foundation Boulder County
 Don & Lorraine Freeberg Foundation
 Louise & Bob Dudley
 Walter Eberspacher
 Facebook
 Heidi & Mark Leachman
 Longmont Community Foundation
 Linda & Walt Pounds
 Bonnie & Charles Re
 Stapp Inspires
 Virginia W. Hill Foundation
 Julie & Scott Von Eschen
 Robert Von Eschen

GOLD \$5,000-\$9,999

Albertsons Companies Foundation
 Sally & Sandy Bracken
 Broomfield Community Foundation
 Charles E & Carol Miller Family Foundation
 Bob & Judy Charles
 Meagan & Adrian D'Angelo
 Judy & Louie Delaware
 The Denver Foundation
 Emerson
 Fidelity Charitable
 Flood & Peterson Insurance
 Jackie & Brent Friesth
 Lynda & Bill Johnson
 Knights of Columbus - Lafayette Council
 Leo Hill Charitable Trust
 Linda & Dick Livingston
 Lin & Jim Loftus
 Alfred & Marty McElwain
 Medtronic
 Motorola Solutions Foundation
 Jana & Chris Petersen
 Ben Ruskay
 Linda & Danny Souders
 Debbi & Art Stapp
 Heidi Storz & Roque Ramirez
 UPS Foundation
 Wells Fargo

Wiland
 Mary Lou & Dal Wnorowski
 Mark Zentner

SILVER \$2,500-\$4,999

Janan & Ron Alford
 Margot & Andy Angstrom
 Anonymous (2)
 BOK Financial

Beth & Mike McClellan
 McGuckin Hardware
 Robert Mescia
 Patti & David Micklin
 Shannon Morgan
 Sue & Michael Myers
 Rebecca & Matt Novinger
 Kara & Curt Ollila
 Natalie & Mike Padula

Elizabeth Aslin
 Monica & Randy Baham
 Caroline & Warren Baker
 Lisa Van Goor & Bob Bauers
 BCinteriors
 Jude Bea
 Dana & Brad Bickham
 Lois & Randy Bjerke
 blue Federal Credit Union
 Bolder Personal & Business Insurance
 Boulder Community Health
 Tanya Kelly-Bowry & Chris Bowry
 Tracy & Dan Brophy
 Karen & Don Brown
 Linda Cain
 Cain Travel Group
 Katie Hawkins & Dale Charles
 Dianne & Bob Charles
 Charles Schwab Foundation
 Russ Christiansen
 Kristen & Andrew Christie
 City of Lafayette
 City of Louisville
 Barb & Chris Clemens
 Colorado Financial Management
 Claudia & Scott Culley
 Kim Cutler
 Janell & Pat Daly
 Bonnie Darnell
 David E. Post Family Foundation
 Mary & Tom Deany
 Design Mechanical
 Mary Dichtl
 Carolyn & Bill Doying
 David Edwards
 Mark Emery
 First National Bank of Omaha
 Beth & David Fish
 Flatirons Financial Planning
 Freewave Technologies, Inc
 Mary & Bob Gaddis
 Tamara & Mike Gaffney
 Ken & Marie Gambon
 Judy & Jeff Gass
 Lisa Taylor & Lance Goff
 Hays Companies
 Nancy & Dennis Heagney
 Dianne Ladd & Bruce Holland
 Suzanne & David Hoover
 Kaiser Permanente



Little gestures mean so much. Longtime friend and supporter of Imagine!, Walt Pounds, owner of Fair Farm, donated 25 dozen pasture-raised eggs each week to Imagine! group homes. Fair Farm also employs Imagine! clients to help run the farm.

Boulder Area Alumnae Panhellenic
 Virginia & Scott Brown
 Tim Bulk
 Amy & Kevin Callahan
 Melodie & Lou DellaCava
 Eide Bailly P.C.
 Elevations Credit Union
 Vicki & John Greff
 Susie Hajek
 High Plains Bank
 Barbara & Ian Hill
 Joan & Stu Horsfall
 Kristin & George Karakehian
 Kathy & Dale King
 Susan LaHoda
 Longmont Florist
 Jennifer & Eric Love
 Lynn & Helen Clark Fund
 Ariel & Cliff MacTavish
 Tasia & Tim Maxwell

PDC Pharmacy
 Dee Perry
 Philadelphia Insurance Companies
 Prime Industries
 Pueblo Bank & Trust
 Maria & Art Richmond
 Rush Management
 Ursula & John Scarano
 Susan & John Sidwell
 Tebo Properties/Tebo Family
 Sandy Tyler
 Western Disposal Services
 Heather & David Wier

BRONZE \$1,000-\$2,499

Adams Bank & Trust
 Judy & Rob Allan
 Anonymous
 April Fund
 Lu Walters & Kent Arnold

Kerrane Storz
 King Soopers Reward Card
 Kevin Klein
 Knights of Columbus -
 Boulder Council
 Knights of Columbus -
 Northglen Council
 John Langevin
 Natalie Hanlon-Leh & Chris Leh
 Leh Law Group
 Lindsey & Craig Liebler
 Gayla & Pete Lindquist
 Lucky's Market
 Joan & Bob Luxner
 Alice & Pete Madden
 Petrea & George Mah
 Andrea Mann
 Meg McClellan & Jim Barlow
 Rachel Lederman-Melendez &
 Xavier Melendez
 Pat & Tom Metz
 Roz & Harvey Micklin
 Barbara & Tom Miller
 Vicki & Tom Miller
 Northrop Grumman Corporation
 Trish Murray & Mike Page
 Amy & Rajul Pandya
 Parker Personal Care Homes
 PASCO
 Kathy & Brad Pedersen
 Anne Marie & Paul Pewterbaugh
 Platte River Wealth Advisors
 Polk Family/Pedestrian Shops
 Carla & Sam Rapp
 Phil Rice
 Catherine & William Rogers
 Diane Rosenthal
 Jeri Rowley
 Julie & Jerry Rudy
 Carmen & Mark Sample
 Sample Supports
 Vickye & Ron Secrist
 Sentinel Management
 Terre Rushton & Chuck Sisk
 Marie & Chuck Sonnen
 Leona & Bernie Stoecker
 Tom Stoner
 Tebo Family Impact Fund
 Shari Tebo
 Jessie & Kyle Thompson
 Taylor Thompson
 Trimble
 Jessica & Jeff Tyler
 Diane & Richard Vander Meer
 Janine & Andrew Volkmann
 Lynne & Rick Waidler
 Wendy & Ed Wassom
 Chuck Wellman
 Stephany & Bruce Westhusin
 Whole Foods Market
 Alex Wicks
 Carol Wier
 Marcia & Dave Wyatt

ASSOCIATE \$500-\$999

Richard Ackerman
 AMG Charitable Gift Foundation
 Siga & Rob Andrew
 Anonymous (3)
 Apollo Mapping
 Kristin Swenerton & Greg Atkinson
 Kelly & Bill Atteridg
 Suzanna Baird
 Ball Corporation
 Laura & Garret Ball
 Joann Fedor & Gavin Bell
 Terri Benjamin

Beth & John Bosio
 Shannon & Steve Bryant
 Beth Buchanan
 Kim & Steve Ceresa
 Jolene Clark
 Colorado Events
 Colorado Knights of Columbus
 Community First Foundation
 Jim Cracraft
 Delia & Rodger Creel
 Joni & John Creighton
 Pat & Chris Current
 Lynn & Ken Curtis
 Keriann & Paul Davis
 Olivia Edwards
 EMSA Fund
 Stacy & Juan Evans
 Harris Faberman
 Cynthia Farrell
 Becky Fase
 Lisa Fiero & David Day
 Diane & Jerry Gollnick
 Becca Fischer & David Goossen
 Cathy Faughnan & Dave Green
 Ken Hackbarth
 Michelle & Tim Hallett
 Taylor Hickerson
 Kari & Rob Johnson
 Carolyn & Sam Johnson
 Karen & Jon Jones
 Laura & Bill Koch
 KONG Company
 Denise Kramlich
 Ethan LaHoda
 Diana & Rich Lirtzman
 Kat & Christopher Little
 Lockton Investment Advisors
 Karissa & Dan Mackin
 Sara & Dave Marusiak
 Alex & Peter McNutt
 Carol Ann & John Mehaffy
 Mile High United Way
 Haila & Chris Mirto
 MOD Moms
 Ernestine Mondragon
 Yolanda McConnell & Colin Murphy
 Daniel Murphy & Barbara Abrahams
 Karen & John Nevins
 Kathy & Rick New
 Barbara & Harry Newman
 Amy Nilsen
 Steve Norwood
 Mario Ojeda
 Marce & Tyler Olsen
 Brenda & Brian Otteman
 Barbara Oviatt
 Daniel Parise
 Ellie & Harry Poehlmann
 Zoe Polk
 Jody & Doug Robinson
 Rebecca Rose
 Sandy & John Ross
 Zan & Jon Royce
 Elizabeth & Eric Ryterski
 Mia Sanchez-O'Dell
 Deb & Doug Sandersen
 Andy Shaw
 Anne & Kevin Sheridan
 Renee & Tony Speights
 Sara & Eldyn TarBush
 Barbara & John Taylor
 Sara & Sam Taylor
 Anne & Cary Tengler
 Pat & Paul Vero
 Carl Vertuca
 Rob Vissers
 Catherine & Adam Vonachen

Jan Walden
 Patti Ann O'Brien & Jim White
 David Williams
 Lo Anne Zentner

SUPPORTER \$250-\$500

Jeff Abrams
 Acreage Restaurant
 Shadia & Fredrick Ahmad
 AmazonSmile Foundation
 Anonymous
 Stef Streamer & Ashley Biedler

Knights of Columbus -
 Longmont Council
 Rachel LaHoda & Chad Petersen
 Nancy & Frank Latino
 Chad Lawson
 Lighting Eliminators & Consultants
 Andrew Lollback
 Patricia Lowe
 Tabitha Luther
 Julie & Edward Markiewicz
 Mary Helen Chrisbens & Chris
 Matthews



For the 16th year in a row, hundreds of individuals served by Imagine! and their families enjoyed an amazing Thanksgiving meal thanks at Zolo Southwestern Grill and Big Red F Restaurants. Everyone had a marvelous time, and the turnout was fantastic despite a huge snowstorm a few days before. Big Red F staff members cook the food, much of it donated by their vendors, and volunteer their time and effort on Thanksgiving Day. Several family members made a point to say how much this event means to them.

Helen Bosley
 Rachel Bowles
 Heather & Matthew Brandt
 Diedre & Bennett Braverman
 Jane Brennan
 The Britton Family
 Katy Brown
 Carolyn & Joel Buck-Gengler
 Anne & Peter Carpenter
 Centering Healthcare Institute
 Janice Charles
 John Clarke
 Karen Collins
 Sherry & Doug Conner
 Emmy Conroy
 Ann & Robb Cope
 Leslie & Bob Cutler
 Megan & Gary Dack
 Marie James & Byron Dudley
 Korina Bersentes & Brian Egaas
 Ella Washington Agency, Inc
 Devin Eppers
 Lindsay Radford & Jason Foster
 Jan & Larry Foster
 Gretchen & Vic Fruehauf
 Eva Gaudio
 Rachel & David Gehr
 Tom Glassen
 Sandy Green
 Merix & Brian Gustin
 Kevin Harding
 Martha Heimbaugh
 Holly & Grant Hickman
 Elizabeth Hill
 Anne Holmes
 Mara & Drew Johnson
 Audrey & Paul Johnson
 Christie Johnston
 Amy & Andy Kaufman
 Patty & Steve Keesler
 Eva Klemens
 Shannon Kluth

Edwin McDowell
 Liza & Burton McKenzie
 Genessa & Chris McVay
 Ann Marie & Keith Michalkewicz
 David Millhiser
 Connor Mitchell
 Lael Montgomery & Dennis Wanebo
 Carolyn Murphy
 Lucy Mwangi
 NetApp
 Kathleen & Bob Norris
 Lorraine & Tom Novinger
 Rachel & Brett Paradis
 Peak Asset Management
 Whitney Pinion
 Rachel Richman
 Ripple Effect Martial Arts
 Lorie & Steve Roch
 Joe Rudy & Leslie Rothman
 Marcia & Mark Sadler
 Amanda & Dave Sanderson
 Cheryl Barr & Ron Sandgrund
 Donatella & Mark Scanniello
 Lori & Jeff Scheiffler
 Rachel Schulman
 Beverly Shaw
 Phillip Shull
 Caroline Siegfried
 Patti Smith & David White
 Josephine Stout
 Lisa Strachan
 Alice Swift
 Linda Thompson
 Eileen & Mel Vanek
 Rebekah & Jeremy Watada
 Cate & Steven Werner
 Sterling Wind
 Michael Zimmerman

Laura Koby-Zuckerman &
 Budd Zuckerman

FRIEND \$1-\$249

Enid & Mark Ablowitz
Paris Aguilar
Tricia & Mike Akins
Alma & Richard Alber
America Alva
Berit Amlie
Anna & Phil Amos
Mary Anderies
Anonymous (13)
Kristen & Kevin Anthony
Susan Anthony
Lanette Arand
Anne Arnold
Joel & Dub Ashner
Stefanie Asin
Lauren Aubrey
Rachel Audette
Cecil Macgregor & Damaris Ayuso
James Bachman
Melissa & Josh Bachrach
Jillian Peeke & John Ball
Mary & Jay Balzer
Mary Ann Baril
Ruth Jacoby & Doug Barnert
Matt Barnert
Nicole & Matt Barnes
Anne Bartels
Karissa & Andre Becklund
Charlotte Bell & Jeremy Broestl
Ashley Bennett
Jeremy Bergener
Fredda & Eric Berger
Kaitlyn Bergeron
Margaret Berglund
Rose Bernstein
Erica Berridge
John Berry
TJ Berry
Jonathan Betz-Zall
Christopher Black
Marta Blanco
Kayla Blood
Bobo's Oat Bars
Jason Bodnick
Ellen & Paul Boehm
Karen & Eric Boelts
Ann & John Boettcher
Valerie Boggs
Mary Pat & Greg Bolton
The Borthwick Family
Chelsea Boudreau
Kori Bowers
Cheryl Pricone & John Bradin
Merna & Carl Brady
Jane Brady-Ertz
Susan & Richard Brand
Adam Bratter
Jessica Braverman
Wendy Breitenfeld
Joel & Reinhardt Broszat
Kristin Brousseau
Jimmie Brown
Virginia Brown
Sherry & Hal Bruff
Laura Bryant
Nancy & Buck Buchanan
Caleb Bucher
Barb & Tom Buell
Jo Bullard
Susan Burd
Cathy & Jerry Burnes
Wendy Burroughs
Maryann & Paul Bursiek
Amanda & Wyatt Burton
Stewart Cables
Jill Caceres

Erin Calderwood Polen
Karen Cameron
Cara Campanella
Sue Capitelli
Kara Caraway
Diane Carroll
Kathy Carroll
Logan Chandler
Marguerite & Carlo Ciaravino
Elena Ciaravino
Tess Clarkson
The Clextion Family
Margaret Clinton
Cody Clocktower
Allison Closson & Steve Elliott
Emily Coffee
Nancy Colby
Kathy & Tim Cole
Wayne Coleman
Molly Collins
Community Shares of Colorado
Kay & Ken Conger
Michelle Conkey-Sajban &
John Sajban
John Connell
Susan Connelly
Kevin Conway
Gary Corbett
Jenna Corder

Fran Dugan
Alyssa Duran
Mandy Durbin
Leslye & Tim Durst
Sallie & George Duvall
Katie Earnest
Karirian Enriquez
Dolores Esposito
Lee & Greg Falk
Julie Feagin
Jennie & Joshua Feiger
Jessica & Allen Feld
Faye Field
Raili & Scott Filion
Kelsey Fisher
Margaret Fitzgibbons & Tom Daly
Addie Fleege
Logan Fletcher
Jennie & Chad Fletemeyer
Linda Flinkman
Judy & Don Forkner
Diana Forrest
Kay & Michael Forsythe
Kim Foster
Betsy Fox
Dan Fox
Frontstream
Gaku Ramen
Sarah & Jeff Gallant

Megan Grimm
Frances Groves
Linda & David Grush
Ruth-Ellen Gura & Bill Ham
Jennifer Burton & Don Haddad
Judi Halbert
Barb Halpin
Kelly Halverson
Gayle Hamer
Karen & Mark Hamilton
Chris & Rob Hannagan
William Happy
Jody & Greg Harrell
Elizabeth & Rick Haskins
Corinne Haslett
Lee Hatch
Becca Hatheway
Katy & Tim Haverstick
David Hawley
Judy & Jim Heinze
Jennifer Hendershot
Trudi Herstein
Kelsey Hess
Aleece Hiller
RaShelle & Mike Hindman
Liz & Jon Hinebauch
Terry & Fred Hobbs
Tracy & Chris Hobbs
Julie-Anna Homeyer
Zara Hopkins
Jan & Paul Hoskins
Ruth Howe
Virgil Howell
Samantha Howorko
Mr. H. Lawrence Hoyt
Brooke Hubbard
Dot & John Hudson
Melissa Hunt
Karen Hunter
Barbara Huntsman
Georgette Ibanez
IBM Corporation
Kate Inskeep & Derek Davis
Chelsea Jackson
Amy Jacques
Jamie & Bill James
Ann Jamieson
Maryann Jaross
Stanley Jarrett
Allison Joel
Rhonda Johannes
Anthony Johnson
Katrina Johnson
Candace Johnston
Karl Heuerman & Elise Jones
Susan Jones
Tracey Jones
Elizabeth Zentner & James Joque
Lisa Joseph
Monique Jourdan
Ms. Ingrid Julyk
Junior Reviewers Club
Karen & David Kalis
Reg Keddie
Angelo Keely
Samantha Kelly
Gabrielle Kennedy
Syd & Marty Kiebert
Shanda Kinch
Sherry King
Dan Kingdom
Lauren & Stuart Kingsbery
Walter Kingsbery & Jane Christman
Kristi & Mark Kinney
Marty Kinsley
Andrea Kintop
Debi Klein



Get Started With Facebook Fundraisers

It's easy to create a fundraiser, share it with friends and reach your goal.

Raise Money for a Nonprofit

Twelve people supported Imagine! by creating Facebook birthday campaigns, resulting in 125 donations. In addition, 86 people donated to Imagine!'s COVID-19 Rapid Response Fund on Facebook. Collectively, \$10,210 was raised to support Imagine! during FY2020.

Aminda Courtwright
Christina Craigo
Corinne Cramer
Mardelle & Bert Crist
Karen Leh & Lisa Curtis
Shari Curtis-Brown
Cusp Emergence
Monica & Ottilie Czajkowski
David Daniel
Marissa Daniel
Cammie & Cass Daniels
Beth Davis
David Day
Sue Deans
Diana & Joe DeBrohun
Kim Degney
Nancy Deklyn
Elise Delaware
Pamela & David Detra
Connie Diaz
Rachael & Roger Dickens
Dana Dimitrion
Jean & Charlie Dinwiddie
Celeste Dolan
Joann Donnelly
Steve Donner
Jacob Dorfman
Susan Dornbusch
Rob Dotterweich
Joan Dowling
Gretchen Drennan

Jennifer Garcia
Marcia Garcia
Barbara Gaskill
Jessica Gaylord
Lauren Gerace
Shana & Max Gerson
Ellen Gerstein
Gigi & Co Pet Products
Jodie Gilbert
Miriam Gilbert
Tracy & Robert Gilbert
Courtney Gimeno
Becca & Sean Gingerich
Sandra Goble
Susan Goede
Anita Goldbort
Golden Nuggets Kiwanis
Helen & Marty Goldman
Jodi Goldstein
Kathy Goode
Melanie & Brody Goodman
Layne Goodman
Cindy Goodrich
Google
Cheri Gould
Stephanie Grainger
Donna Grau
Andrea & Tom Grautski
Heather Greenberg
Audrey Griffin
Helen Griffith

Maria Klickna
 Laura & Chris Koerner
 Kona Ice of Broomfield
 Lenna & Jon Kottke
 Melody Kremel
 Brittany Kruse
 Colleen Kuebel
 Dr. Jeff Kupfer
 Priscilla & John Lacy
 Lafayette Elementary
 Amanda Lamey
 Jeanne Landry
 Gabriele Langan
 Timmy Langton
 Brad Lapidus
 Sean-Alex Larrabee
 Andy Larsen
 Rebecca Larson
 Johnny Lasker
 Katie & Jeff Latier
 Charlene Laughlin
 Leah Laveer
 Kristin Lavelle
 Jodi Lawrence
 Brian Laxar
 Marlee Lederer
 Connie Lehman
 Violet Lehman
 Shannon & Dave Lemmon
 Alaine & Joey Lerner
 Carley Levasseur
 Amanda Lewis
 Christine Lewis
 Kerry Lightenburger
 David Lilja
 Pat & Eldon Lindeman
 Dave Lindholm
 Karen Lo
 Evelyn Lopez
 Wendy & Will Low
 Richard Lowe
 Sandra Luna-Parra
 Mario Lurig
 Stephanie MacAlpine
 Kathy & Nick Madsen
 Nancy & Peter Mahoney
 Katelyn Mamizuka
 Leigh & Danny Mansberg
 Grace & Matt Mansfield
 Maple Hill Foundation/Community
 Foundation Boulder County
 Judy & Dick Marcum
 Barbara & Larry Marquess
 Joan Martin
 Lizaztec Martinez
 Amy & Gene Marx
 MasterCard
 Mikki & Lorne Matheson
 Shirley Matuszewski
 Leah Mayo
 Sean McCafferty
 Brock McCarty
 Lou & Gary McClelland
 Janis McCormick
 Paula McCormick
 Laura & Chris McDonald
 Nick McDowell
 Susie & John McFetridge
 Sylvia McGee
 Stephanie & Chris McGilvray
 Sequoia McGinnis
 Megan McKean
 Allison McNa
 Thomas McNeil
 Pat & Gerry McNutt
 Harriet Medes
 Colten Meisner

Kellie & Frank Mendicino
 Lindsay & Matt Menough
 Ellie & Ed Merchant
 Cheryl Merlino
 MGM & United Artists Services
 Jessie Michaud
 Carol & Charles Miller
 Tad Miller

Brett Osborn
 Marianne Owen
 John Pacheco
 Kennetha Paetow
 Ms. Marilyn Palmer
 Shannon Pardue
 Robert Parizek
 Julia & Marshall Peavy



Masks have been a vital tool in helping ensure people are safe from the spread of COVID-19. Imagine! was fortunate to receive donations of thousands of handmade masks from businesses, individuals, and organizations. These include the Enclave neighborhood in Louisville, The Hidden Treasure 2 in Longmont, Global Down Syndrome Foundation, Longmont Rotary, Stellari, and Imagine! staff members and their families! We have given masks to Imagine! employees, people we serve, and their families!

Athena & Gary Mills
 Michelle Minno
 Virginia Mitchell
 Gillian Mobley
 Michelle Moffatt
 Barbara & Robert Mohr
 Michael Monachello
 Lisa & Scott Monette
 Amy Montanari
 Susan Montgomery
 Renata Moore
 Missy & Jim Morgan
 Phil Morgan
 Ruth Morgan
 Candice Morrissey
 Agnes Moser
 Jonah Moss
 Angie Munoz
 Grayson & Carolyn Murphy
 Timothy Murray
 Bry Myall
 Ridgely & Adam Myers
 Margaret Naftel
 Cynthia Navarrete
 Jeff Near
 Kathy & Gregg Near
 Kurk Near
 Morgan Neely
 Paula & Mike Nelsen
 James Nelson
 Faye Nepon
 Ellen & Timothy Newcomer
 Cindy & Dwight Newell
 Tyler Nielsen
 Joshua Nims & Esther Brown
 Gabrielle Norton
 Tom Norton
 Judy & Jim Novinger
 Connie & Gary Nowlan
 Tricia Nudelman
 Katie Nunez
 Helen Nychka
 Jan Keenan & Dick Olson
 Katie & Trey Olson
 Caren Orem
 Erin & Joe Ortiz

Erna Maj & Bobby Pelz
 PEO Chapter CJ
 Holly Perna
 Jane Peterson
 Janese & Aaron Petuchowski
 Mary Pflum
 Robin Phillips
 Alyssa Phinparphat
 Grace & Don Pierce
 Laurell & Robert Pilkey
 Kathleen Pilla
 Sharon Plonsker
 Sharon & Jacob Pomerantz
 Linda & Mark Posner
 Kelly Pretsch
 Barbara Pringle
 Erin Quinn
 Brooke Rambold
 Thomas Rampy
 Judith & Arlan Ramsay
 Stacie Ranniger
 Rappleye & Associates
 Eva Raschke
 Angela Rauscher
 Alyson Ray
 Sue & Jim Rector
 Evan Redding, Jr.
 Sandy Redding
 Sharon & Dan Reese
 Jan Reisman
 Georgia Reiss
 Daniel Reizenstein
 Callie Rennison
 Carolyn & Robert Rentto
 Martha Ridgway
 Carol Riggs
 Roadmasters Auto & Tire
 Colette Robertson
 Laurel Rochester
 Jane Rogers
 Gay & Charles Rohrer
 Robert Rohs
 Sarah Rollins
 Nova Romero
 Lee Rood
 Dale Rose

So Rosenblum
 Trevor Rosenthal
 Judy & Raymond Rossi
 Rachel Rowell
 Chris Rubeck
 Phil Rubin
 Peggy Obenhaus & Larry Ryan
 Lynne Ryan
 Heather Sabo & Derek Webb
 Susan & Robert Sahn
 Hannah Sallaz
 Jenna Sallee
 Joyana Samsel
 MaryAnn Sanchez
 Martha Sands
 Nancy Goldaper & Garry Sanfacion
 Toni & Jordan Sarazen
 John Satkowski
 Debra Schaefer
 Galen Scheidenhelm
 Alexis Schenk
 Michele & Ken Schipper
 Lacey & Jason Schlosky
 Jeanne Schmid
 Jeff Schmidt, Ph.D.
 Michael Kastner & Nancy Schmidt
 Lois Schoenbrun
 Kathryn Schrader
 Erin Schram
 Chastity Schultz
 Mona & Herold Schultz
 Jeanne & John Schutz
 Angela Marlino & Mike Schwartz
 Catherine Schwedler
 Janna Schwind
 Susan Seiler
 Jonathan Selbin
 Linda & Len Serdiuk
 Kathryn Setzer
 Cara Sheridan
 Bill Shiovitz
 Michael Shiroma
 Patti Showman
 Sherry Silinger
 Lisa Silver
 Mary Simonson
 Erika Skewes
 Charlotte Slack
 Dorothy Reed-Sleeper & Joe Sleeper
 Renata & John Smathers
 Sarah Smith
 Stanley Snyder
 Spearfish Canyon Owners Association
 Korrine Spears
 Sondra Bland & Bob Spencer
 Carolyn Spoon
 Michael Stallman
 Erica Stamm
 Katrina Stanford
 Jodi Stanowick
 Michelle Stark
 Gary Stebick
 Casey Stelter
 Maggie Stevens
 Linda & Jim Stinson
 Jane Stockebrand
 Bill Storinger
 Mary & Keith Stormo
 Cynthia Strohschein
 Paige Lawrence & Don Sullivan
 Brenda & Steve Summers
 Sarah & Bob Sutherland
 Judith Sutter
 Paula Swanson
 Barb & Art Sward
 Michael Tavarez
 Katie Torres & Paul Terhaar

The Philoptochos Society of Sts. Peter
& Paul Greek Orthodox Church
Sue & Scott Thomas
Tara Thomas
Michael Thompson
Victoria Thorne
Shantie Toolsie
Mandy & Graham Traynor
Jill True
Gabriel Tuerk
The Tumblin Family
Andorra Turner
Kelly Tusa
Chantelle Tweten-Crumbliss
Kathy Tyler
Jada Uylett & Logan Hawkins
Senta Vagle
Taylor Van Allen
Michele & Robert Van Pelt
Colene & Don Van Winkle
Emily Vanek
Kenny Vasko
Kate Veeder
Kathy Vick
Rachel & Adam Vick
Marilyn & Lance Vinson
Sam Walker
Jodi & Ryan Walters
Amelia Warner
Kris & Steve Warner
Victoria Warren
Sandy Waterhouse
Corinna & Gerald Weaver
Kenzie Webb
Wendy Weeks
Gretchen Weider
Lenore Weissberg
Scott Wendelberger
Carol & Don Werthman
Susan & Richard Westfall
Tim West-Heiss
Thelma Whitaker
Suzanne Whitman
Wild Birds Unlimited
Holly Wilder
Jennifer Wilger
Hadley Williams
Alex Wilsdon
Denise & Joseph Winslow
Dana & Adrian Wisniewski
Terry & Roger Wittern
Donna Wolford
Stephanie Wolfson
Katherine Wood
Linda & Michael Wood
Carol Woodman
Barb & Rich Woolman
Theresa & Scott Wrangham
Hunter & Andy Wright
Haley Wu
Dana Yaussy
Kelly York
Connie Young-Dubovsky
Jodi Yuspeh
Karen & Nigel Zeid
Jaye & Bill Zessar
Camille & Hossein ZiaShakeri
Jamie Zimenoff
Petra Zlota

GIFTS IN TRIBUTE

In honor of Amelia Abel
Jessica & Allen Feld
In honor of Lisa Abrams
Jeff Abrams
In honor of Nick Altomare
TJ Berry

Kevin Conway
Mandy Durbin
Barbara Gaskill
Zara Hopkins
Amy Jacques
Johnny Lasker
Kristin Lavelle
Kathleen Pilla
Sherry Silinger
Michael Tavarez
Shantie Toolsie
Holly Wilder
In memory of Johanna Jodi Arnold
John Satkowski
In memory of Allie Balzer
Mary & Jay Balzer
Ellen & Paul Boehm
In honor of Matt Barnert
Anonymous
In honor of Ras Marcus Benjamin
Adam Bratter
Cody Clocktower
Helen Griffith
Victoria Warren
In memory of Christy Bower
Fran Dugan
In honor of Hannah Bozzay
Deb & Doug Sandersen
In honor of Rhonda & Gary Cardow
Mark Emery
In honor of Judy & Bob Charles
Dale Charles & Katie Hawkins
In honor of Joan Clextion
Mary & Gary Clextion
In honor of Claudia & Scott Culley
Amelia Warner
In honor of Aidan & Luca & Curtis-Leh
Karen Leh & Lisa Curtis
In honor of James Densberger
Carol Wier
In honor of Dana Dimitrion
Dana Dimitrion
Harriet Medes
William Happy
Samantha Kelly
Katelyn Mamizuka
Michelle Stark
In honor of Elisha & Scott Doyen
Carolyn & Bill Doying
In memory of Kelly Emery
Virginia Mitchell
In honor of Gabe Eskin
Nick McDowell
In memory of Dennis Fase
Robert Rohs
In honor of Mike Gehr
Karen & Mark Hamilton
Alice Swift
In honor of Ayla Goodman
Aminda Courtwright
Layne Goodman
Reg Keddie
Thomas McNeil
In memory of James Hall
Pat & Chris Current
In memory of Donald Hamilton
Joe Rudy & Leslie Rothman
In honor of Lee Hatch
Lee Hatch
In memory of Mark Hindman
Corinne Cramer
Susan Dornbusch
James Nelson
Mary & Keith Stormo
Barb & Rich Woolman
In honor of Sally & Charles Holmes
Anne Holmes

In honor of Trenton Howell
Virgil Howell
In memory of Jerry Purkape & Glynn Alford
Janan & Ron Alford
In memory of Kristy Kearney
Jim Cracraft
In honor of Gabrielle Kennedy
Ashley Bennett
John Berry
Jonathan Betz-Zall
John Connell
Cass Daniels
In memory of Rosemary Kilhoffer
Julie & Jerry Rudy
In honor of Sherry Brown King
Lanette Arand
Jimmie Brown
Virginia Brown
Sharit Curtis-Brown
Steve Donner
Sherry Brown King
In memory of Gary Klein
Gary C and Ruth M Klein Family
In memory of Janet Krasner
Roz & Harvey Micklin
In honor of Kyle Luxner
Joan & Bob Luxner
Brenda & Steve Summers
In memory of Sarah McInroy
Diane Carroll
In honor of Susan McNutt
Alex & Peter McNutt
In honor of Emily Micklin
Fredda & Eric Berger

Betsy Fox
Ken & Marie Gambon
Rachel & David Gehr
Susan Goede
Linda & David Grush
Trudi Herstein
Aleece Hiller
Tracy & Chris Hobbs
Christie Johnston
Syd & Marty Kiebert
Debi Klein
Colleen Kuebel
Jeanne Landry
Brad Lapidus
Leigh & Danny Mansberg
Amy & Gene Marx
Jessie Michaud
Michelle Minno
Ridgely & Adam Myers
Harry & Harry Newman
Caren Orem
Marianne Owen
Janese & Aaron Petuchowski
Linda & Mark Posner
Alyson Ray
Sharon & Dan Reese
Jan Reisman
Trevor Rosenthal
Phil Rubin
Heather Sabo & Derek Webb
Michele & Ken Schipper
Rachel Schulman
Lisa Silver
Leona & Bernie Stoecker
Jessica & Jeff Tyler



Imagine! employees are the backbone of Imagine!'s mission, and Lily's Sweets recognized the heroic work of keeping Imagine! clients safe and healthy from the outset of the pandemic. Lily's Sweets donated a ton of chocolate peanut butter cups to distribute to our employees as a thanks for their hard work during these hard times. They included this message to employees: "Show the love to someone who truly deserves it - you! We appreciate all of the hard work you've been putting in to navigate these crazy times, and that means you deserve to feel the love - in chocolate form and beyond!"

In honor of Patti Micklin
Joel & Dub Ashner
Stefanie Asin
Kristin Swenerton & Greg Atkinson
Rose Bernstein
Marta Blanco
Jason Bodnick
Kori Bowers
Virginia & Scott Brown
Karen Cameron
Wayne Coleman
Karen Collins
Connie Diaz
Celeste Dolan
Gretchen Drennan

Susan & Tom Wilcox
Sterling Wind
Stephanie Wolfson
Jodi Yuspeh
In memory of Billy Montgomery
Charlene Laughlin
In honor of Kathy Near
Kris Call
Joan Dowling
Barbara Huntsman
Rhonda Johannes
Kathy & Gregg Near
Kurk Near
Mary Pflum
Carol Woodman

In memory of Quentin Dewalt Novinger
Lorraine & Tom Novinger

In memory of Anna Nutt
Mary Ann Baril
Jane Brady-Ertz
David E. Post Family Foundation
Lee & Greg Falk
Sandra Goble
Kelsey Hess
Stanley Jarrett
Angelo Keely

Amy & Gene Marx
Meg McClellan & Jim Barlow
Janis McCormick
Roz & Harvey Micklin
Michelle Moffatt
Lynne Ryan
Martha Sands
Michele & Ken Schipper
Lois Schoenbrun
Rachel Schulman
Susan Seiler

Katherine Wood
In honor of Erika Skewes
Jessica & Jeff Tyler

In honor of Nikki Stephens
Evan Redding, Jr.
Sandy Salazar-Redding

In honor of Stephen Tebo
Leona & Bernie Stoecker

In honor of Dylan Thompson
Bonnie Darnell

In honor of Morgan Thompson
David Daniel

In honor of Alyssa Tumblin
Melissa Tumblin

In memory of Aaron Tuneberg
Shannon Morgan

In honor of Benjamin Tyler
Laura & Chris Koerner
Erin & Joe Ortiz
Kathryn Setzer
Mandy & Graham Traynor
Rachel & Adam Vick

In honor of Jessica Tyler
Kathy & Tim Cole
Jodi Goldstein
Patti & David Micklin
Erin Quinn
Cynthia Strohschein
Jessica & Jeff Tyler
Kathy Tyler
Kathy Vick

In honor of Colene Van Winkle
Erna Maj & Bobby Pelz
Cheryl Barr & Ron Sandgrund

In memory of Becky Von Eschen
Robert Von Eschen

In honor of Laura & Jeff Webb
Diana Forrest

In honor of Matthew Wood
Cheryl Pricone & John Bradin

Fisher Honda-Acura
Flagstaff House Restaurant
Gebhardt Automotive
Alyssa & Jesse Henson
Stellari
Wonder Tours
YMCA of Boulder Valley

IN-KIND ASSOCIATE \$500-\$999

Janan & Ron Alford
Blackbelly Market
Capital Sports Advisors
Compass Chiropractic
Eldora Mountain Resort
Eldorado Artesian Spring
Fitness Edge
Golf Westminster / Walnut Creek
Isabelle Farm
Jodi Ellen Photography
L.I.D. Landscapes
Barbara & Craig MacCambridge
Polar Bottle
Sage & Savory Catering
Small Planet eBikes
Marie & Chuck Sonnen
St. Julien Hotel & Spa
The Ridge at Castle Pines North
Walters & Hogsett Fine Jewelers
Winter Park Resort

IN-KIND SUPPORTER \$250-\$500

97.3 KBCO / iHeartMedia
Richard Ackerman
Arapahoe Basin
Backcountry Access
Mary & Jay Balzer
Barbara & Company
Beeriodic Enterprises
Bobo's Oat Bars
Boulder Country Club
Center of Attention Lash & Brow
Colorado Athletic Club
Comedy Works
Fairfield By Marriott
Front Range Anglers
Ken & Marie Gambon
Gold Key Travel
Isle Casino Hotel
J&L Distilling Company
Jeffrey K. Abrams Architect P.C.
JLounge
KONG Company
Lake Valley Golf Club
Heidi & Mark Leachman
Left Hand Brewing Company
Mindful Works
MyChelle Dermaceuticals
Omni Interlocken Resort
OTIS Coffee Co.
OZO Coffee Company
Jana & Chris Petersen
Pedestrian Shops
Roofworx
Sanitas Skincare
Smoker Friendly
Linda & Danny Souders
The Hiltons on Canyon
The Sink
TinkerMill, The Longmont Makerspace
Jessica Tyler
VSP Vision Care
Wibby Brewing



Imagine! employee Andorra Turner reached out to us to let us know that she had 3D printed some "ear savers" for people who wear masks all day. Then we learned that Imagine! employee Erin Schram was also printed some! They both generously donated them to Imagine! employees.

Gabriele Langan
Chad Lawson
Grayson & Carolyn Murphy
Carolyn Murphy
Yolanda McConnell & Colin Murphy
Debra Schaefer
Stanley Snyder
Jodi Stanowick
Kris & Steve Warner

In honor of Abraham Paetow
Kennetha Paetow
Rachel Weston Rowell

In honor of Jackie Parise
Daniel Parise

In memory of Cindy Pedersen
Kathy & Brad Pedersen

In honor of Hunter Petersen
Pamela & David Detra

In honor of Jana Petersen
Heather Greenberg
Barb Halpin
Larry Hoyt
Elise Jones
Lee Rood
Vicky & Ron Secrist
Petra Zlota

In honor of Troy Peterson
Jane Peterson

In memory of Eric Poehlmann
Ellie & Harry Poehlmann

In honor of Cari Pounds
Jan & Paul Hoskins

In memory of Leon Reiss
Berit Amlie
Joel & Dub Ashner
Fredda & Eric Berger
Mary Pat & Greg Bolton
Rob Dotterweich
Jackie & Brent Friesth
Judy & Jeff Gass
Rachel & David Gehr
Tracy & Robert Gilbert
Andrea & Tom Grautski
Ruth-Ellen Gura & Bill Ham
Trudi Herstein
Tracey Jones

Charlotte Slack
Leona & Bernie Stoecker
Marilyn & Lance Vinson
Lenore Weissberg

In honor of Sariah Rhiannon
Hannah Sallaz

In honor of Shaun Robinson
Jody & Doug Robinson

In honor of Avi Sanchez
MaryAnn Sanchez

In honor of Peter Schmidt
Michael Kastner & Nancy Schmidt

In honor of Linda Schneider
Barbara Oviatt

In memory of Gene Shaw
Anne Arnold
Helen Bosley
Sally & Sandy Bracken
Susan & Richard Brand
Bob & Judy Charles
Nancy Colby
Gretchen & Vic Fruehauf
Gayle Hamer
Corinne Haslett
Judy & Jim Heinze
Dot & John Hudson
Junior Reviewers Club
Susan LaHoda
David Lilja
Kathy & Nick Madsen
Susie & John McFetridge
Robert Parizek
Ellie & Harry Poehlmann
Judith & Arlan Ramsay
Carolyn & Robert Rentto
Sarah Rollins
Judy & Raymond Rossi
Zan & Jon Royce
Peggy Obenhaus & Larry Ryan
Linda & Len Serdiuk
Andy Shaw
Spearfish Canyon Owners
Association
Carolyn Spoon
Jane Stockebrand
Denise & Joseph Winslow

IN-KIND GIFTS

Imagine! has always had great support from local businesses. They have donated time and money to help us fulfill our mission. This year has been an especially tough time and we hope you can help support small businesses doing what they do best. Peruse the list below of businesses that have been so generous in their support of Imagine!, and let's all continue to help one another.

IN-KIND PLATINUM \$10,000 +

Michelle & Brett Christen

IN-KIND GOLD \$5,000-\$9,999

Leslie & Sandy Brown
Casa de Manana
Datavail
Lily's Sweets
Zoe & Terry Palmos
The Hidden Treasure 2

IN-KIND SILVER \$2,500-\$4,999

Jackie & Brent Friesth
Jay's Valet
Kristin & George Karakehian
Trinity Orthodontics

IN-KIND BRONZE \$1,000-\$2,499

Karen & Don Brown
Cain Travel Group
Disneyland Resort / Community
Relations
Fall River Village

Laura Allinger
Alpine Modern
Anders Ruff Workshop
Siga & Rob Andrew
Arcana
Arvada Center
Asher Brewing Company
Avery Brewing Company
Avid4 Adventure
Babettes Pizza & Pane
BackJoy Orthotics

Code Blue Carpet Cleaning
Color Me Mine
Colorado Music Festival &
Center for Musical Arts
Colorado Rapids
Colorado Symphony
Costco Wholesale
Dairy Arts Center
Janell & Pat Daly
Denver Art Museum
Denver Center for the Performing Arts

Rachel Leachman
Leah Nickie Advanced Aesthetics
Lems Shoes
Liquid Mechanics Brewing
Little Herbal Apothecary
Lodge Casino - Black Hawk
Longmont Dairy Farm
Longmont Kiwanis Club
Longmont Public House
Longmont Theatre Company
Lovin' Longmont
Alice & Pete Madden
Marriott Westminster
Meg McClellan & Jim Barlow
McDevitt Taco Supply
Patti & David Micklin
Mile High Gliding
Millennium Harvest House Boulder
Monarch Mountain
Morning Glory Cafe
Mountain Sun Pub & Brewery
Moxie Bread Company
Mudrocks Tap & Tavern
Mudslingers Pottery
Karen & John Nevins
Newton Running
Old Friends
Oogie's Snacks
Opera Colorado
Organic Sandwich Company
Origins
Oskar Blues

The Melting Pot
The Nail Studio
The Regiment Shops
The Roost
The Singing Cook
The Tea Spot
The Westin Westminster
Three Leaf Concepts
Tilt Pinball
Tinker Art Studio
Tokyo Joe's
Via Toscana
Wallaroo Hat Company
Nia Wassink
West Side Tavern
Western Disposal Services
Whimsy Paint & Sip
WishGarden Herbs
Wonderbound
Wonderland Brewing Company
WOW! Children's Museum
Yoga Hive Colorado
Zucca Italian Ristorante



Frankie P., a 12-year-old boy who is on the autism spectrum, was forced into distance learning at home during the COVID-19 pandemic, creating increased learning challenges. As part of his remote education, Frankie received art instruction from Will Day, the acclaimed Boulder contemporary artist, who helped him facilitate the creation of this piece. "Colorado amidst the panic" is Frankie's abstract painting depicting a whirlwind of chaos and destruction being experienced during the coronavirus pandemic with a ray of hope emanating from the colors of the Colorado state flag. Frankie and his family shared this ray of hope with our community. Donors were able to receive a lithograph of the painting, and Frankie and his family donated the proceeds to the Autism Society of Boulder County and Imagine!.

Bandimere Speedway
Banjo Billy's Bus Tours
bartaco
Big Red F Restaurant Group
Birdie Bottle
BlackPaw
Blo Blow Dry Bar
Bob L. Burger Recreation Center
BoCo Life
BolderBOULDER
Boulder Ballet
Boulder Beer
Boulder Cork
Boulder Marriott
Boulder Philharmonic Orchestra
Breckenridge Grand Vacations
BrewHop Trolley
Bronco Billy's Casino & Hotel
Buenos Tiempos
Bulldog Yoga
Button Rock Bakery
Cafe Aion
Carelli's of Boulder
Carrabba's Italian Grill
Cedar & Hyde Mercantile
Central City Opera
Centura Health Integrative Medicine
Cheyenne Mountain Zoo
Children's Museum of Denver
Chocolaterie Stam
Christina's Luxuries
City of Louisville Parks & Recreation
Clean Slate Living
Coal Creek Golf Course

Denver Museum of Nature & Science
Denver Zoological Foundation
Dish Gourmet
Downtown Aquarium
Downtown Boulder
Eats & Sweets
Echo Brewing Company
Erie Community Center
ETown
Eureka! Boulder
Fit For Life
City of Boulder Flatirons Golf Course
Friends of Dinosaur Ridge
Gateway Park Fun Center
Gelato Boy
Glenwood Caverns Adventure Park
Grandrabbits Toy Shoppe
Great Wolf Lodge
Haddon, Morgan & Foreman
History Colorado
HW Home
Iron Mountain Hot Springs
Jack's Bar & Grill
& Steamers Coffeehouse
Jacque Michelle
Jefes Tacos & Tequila
Kaia Fit
Kevin Taylor Restaurant Group
Kim & Jake's Cakes
Kroenke Sports Enterprises
KT's BBQ
Mara Kuczun
La Momo Maes
Lafayette Florist & Greenhouses

Peak Entertainment
at 1STBANK Center
Pica's Mexican Taqueria
Piece Love & Chocolate
Pirates Cove Family Aquatic Center
Pitter Patter Children's Boutique
Por Wine House
Posh Splat
Linda & Walt Pounds
Pura Vida
Puzzah!
Quarters Bar & Arcade
Rails End Beer Company
Ramble on Pearl
Rayback Collective
Renaissance Hotels
Restaurant Japango
Nancy Rezac
Rio Grande Mexican Restaurant
Robin Chocolates
Gen & Chris Robson
Samples World Bistro
Savory Spice Shop
Carmen Schultz
Gelato Boy
Shredder Ski & Snowboard School
Shuttles, Spindles & Skeins
Smokin Dave's BBQ
Sport Stable
Starfish Jewelry
Sturtz & Copeland Florist
& Greenhouses
Suerte Tequila
Swoon Jewelry Studios
T/Aco
Tandoori Kitchen
Tara Cluck Dance Center
Teocalli Cocina
The Art of Cheese
The Buff Restaurant
The Chautauqua Dining Hall
The Dragontree Spa
The Greenbriar Inn
The Meeker Vineyard

THE IMAGINE! PROMISE

The Imagine! Promise represents individuals who have let us know that they have included the Imagine! Foundation in their estate plan. They've made a promise to keep Imagine! strong for the future.

Anonymous (1)
Whitney Blair
Lisa Fiero & Joey Crompton
Annette Higgins
Mike Hoover Trust
Kristin & George Karakehian
K.M. Kleinke
Eva Klemens & Caroline Siegfried
Linda & Richard Livingston
Jennifer & Eric Love
Carol & John Mehaffy
Patti and David Micklin
Barbara and Harry Newman
Marianne Nick
Susan LaHoda
Bonnie & Charles Re
Vicky & Ron Secrist
Sharon Svendsen
Elizabeth G. Tarvin Trust

The Imagine! Foundation is grateful for the compassionate individuals, businesses and foundations listed here who gave generously from July 1, 2019 to June 30, 2020. We have made every effort to ensure the accuracy of our lists. If we have misspelled or inadvertently omitted a name, please accept our apologies. Call the Imagine! Foundation at 303-926-6443 with corrections.



Imagine!

Creating a world of opportunity for all abilities

1400 Dixon Avenue
Lafayette, CO 80026-2790
303-665-7789
www.imaginecolorado.org



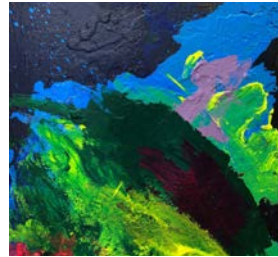
Aspen by Ian



Sun by Nick



Fish by Sean D.



Untitled by Aayush



Untitled 014



Garden by Sean

WAYS TO GET INVOLVED

GIVE

Your philanthropic gifts (cash, stock, even vehicles) enable Imagine! to support people with intellectual disabilities so they may live fully and participate in the community. Give today at imaginecolorado.org/donate, or call the Imagine! Foundation at 303-926-6443.

PARTNER

Join 40+ other local businesses that employ people served by Imagine!. Visit <https://imagedirectservices.org/get-involved/business-partners> to learn more, or email employmentservicesdepartment@imaginecolorado.org to get started.

VOLUNTEER

Give the gift of your time and talents, and everyone will benefit! Call 303-665-7789 and ask to speak to the Volunteer Coordinator to learn about the myriad volunteer opportunities and find a fit that is right for you.

PURCHASE

This report is filled with images of original art created by talented artists who are members of the Imagine! community. You can find more art available for purchase on the Imagine! Etsy page: etsy.com/shop/ImagineColoradoArt. All proceeds from sales go directly to the artists.

PARTICIPATE

Imagine!'s online virtual classes for individuals 18+ who have developmental or intellectual disabilities are thoughtfully designed with the help of our behavioral team. Lesson plans are created to encourage active engagement, communication skills, motor skills, social skills, a sense of community, and independence. With over 50 virtual classes per week, there is something for everyone! Get started at imagedirectservices.org/covid-19/virtual-classes-and-instruction



4th of July Fireworks by Peter H



Gilded Flames by Shelly P



Rockies Rock by Toby



Owl by Tessa



Splatter Paint by Frank



Untitled by Mandy